

COUNTY COUNCIL OF BEAUFORT COUNTY
ADMINISTRATION BUILDING
BEAUFORT COUNTY GOVERNMENT ROBERT SMALLS COMPLEX
100 RIBAUT ROAD
POST OFFICE DRAWER 1228
BEAUFORT, SOUTH CAROLINA 29901-1228
TELEPHONE: (843) 255-2180
www.bcgov.net

D. PAUL SOMMERVILLE
CHAIRMAN

GERALD W. STEWART
VICE CHAIRMAN

COUNCIL MEMBERS

RICK CAPORALE
MICHAEL E. COVERT
GERALD DAWSON
BRIAN E. FLEWELLING
STEVEN G. FOBES
YORK GLOVER, SR.
ALICE G. HOWARD
STEWART H. RODMAN
ROBERTS "TABOR" VAUX

JOSHUA A. GRUBER
INTERIM COUNTY ADMINISTRATOR

THOMAS J. KEAVENY, II
COUNTY ATTORNEY

ASHLEY M. BENNETT
CLERK TO COUNCIL

AGENDA
PUBLIC FACILITIES COMMITTEE
Monday, December 11, 2017
2:00 p.m.

Executive Conference Room, Administration Building
Beaufort County Government Robert Smalls Complex
100 Ribaut Road, Beaufort

Committee Members:
Stu Rodman, Chairman
York Glover, Vice Chairman
Rick Caporale
Michael Covert
Alice Howard
Jerry Stewart
Roberts "Tabor" Vaux

Staff Support:
Colin Kinton, Division Director
Transportation Engineering
Eric Larson, Division Director
Environmental Engineering
Robert McFee, Division Director
Facilities and Construction Engineering

1. CALL TO ORDER – 2:00 P.M.
2. CONSIDERATION OF CONTRACT AWARDS
 - A. Construction Services and Equipment Contract / Security Kiosk at Human Services Building (\$146,154) ([backup](#))
 - B. State Contract Purchase / Two 2018 Dump Trucks for Public Works – Stormwater Infrastructure Section (\$318,308.52) ([backup](#))
 - C. National Joint Powers Association Cooperative Contract (NJPA) Vendor Purchase / One 2018 CAT Model 315F Excavator for Public Works – Stormwater Infrastructure Section (\$162,782) ([backup](#))
 - D. Software, Hardware, Licenses and Technical Assistance Purchase / School Zone Flasher System (\$108,466.02, plus contingency of \$5,423.30) ([backup](#))
 - E. Construction Services Contract / Voters Registration Warehouse (\$210,834, plus contingency of \$21,083.34) ([backup](#))
3. REQUEST FOR ROAD ACCEPTANCE INTO COUNTY ROAD SYSTEM
 - A. Stillwell Road, Bluffton ([backup](#))
4. TRANSPORTATION UPDATE ITEMS
 - A. 278 Gateway Corridor
 - B. Bluffton Parkway / S.C. Highway 46 Traffic Circle



5. UPDATE ON 2017 STRATEGIC PLAN COMMITTEE ASSIGNMENTS

- A. Long-Term County Offices Plan
- B. Arthur Horne Building
- C. Detention Center (\$3.0 Million)
- D. Solid Waste curbside Pick Up / Recycling Implementation
- E. County Facilities Condition Assessment and Plan
- F. Marshside Mama Sublease Agreement

6. CONSIDERATION OF REAPPOINTMENTS AND APPOINTMENTS

- A. Solid Waste and Recycling Board

7. ADJOURNMENT



COUNTY COUNCIL OF BEAUFORT COUNTY
PURCHASING DEPARTMENT

106 Industrial Village Road, Bldg. 2, Post Office Drawer 1228
Beaufort, South Carolina 29901-1228

David L Thomas, Purchasing Director
dthomas@bcgov.net 843.255.2353

TO: Councilman Stu Rodman, Chairman, Public Facilities Committee

FROM: David L Thomas. CPPO. Purchasing Director

SUBJ: New Contract as a Result of Solicitation
Recommendation for Contract Award for Invitation for Bid (IFB) 062917, Human Services Security Kiosk Construction

DATE: 11/09/2017

BACKGROUND:

Beaufort County issued an IFB to solicit proposals from qualified firms to provide construction services and equipment for a Security Kiosk located at the front entrance of the Human Services Building, 1905 Duke Street, Beaufort. A mandatory pre-bid meeting was held on June 14, 2017, at 2:00 p.m. in the Finance Conference Room and two (2) construction firms attended the meeting. One bid was received and opened on June 29, 2017. The County received one bid from the following firm:

VENDOR INFORMATION:

Patterson Construction, Beaufort, SC

COST:

\$146,154

FUNDING:

County staff evaluated the bid, along with our architect R. W Chambers, and determined that Patterson Construction was in compliance with the requirements of the IFB and submitted a fair and reasonable bid.


Account #40080011-54427, 2013 GO Bond Capital Funding. See details of 2013 GO Bond funding/projects attached.

Funding approved: By: Date:

FOR ACTION: Public Facilities Committee on December 18, 2017.

RECOMMENDATION:

The Purchasing Department recommends that the Public Facilities Committee approve and recommend to County Council the contract award to Patterson Construction in the amount of \$146,154.

Attachment:  IFB 062917 Security Up-Grade for BC Human Serv Bldg PRELIM BID TAB.pdf
533.45 KB

cc: Joshua Gruber, Interim County Administrator

Approved: Date:

Check to override approval: ☐ Overridden by:

Override Date:

Alicia Holland, Assistant County Administrator, Finance

Approved: Date:

Approved: Date:

Check to override approval: ☐ Overridden by:

Override Date: ready for admin: ☒

Approved: Date:

Check to override approval: ☒ Overridden by:

Override Date: ready for admin: ☒

After Initial Submission, Use the Save and Close Buttons

IFB 062917 Security Up-Grade for BC Human Service Building BID FORM

<u>Project Number</u>	<u>Description of Services Required</u>		<u>Name of Company</u>	<u>Number of Days to Complete the Project</u>	<u>Base Bid</u>	<u>Alternate 1</u>
1	Turn Key price for the renovation of and the Security Up-grade as described in the attached plans. Price must include all permits, License fees, materials, labor, and taxes.		Patterson Construction	60	\$116,037	\$146,154

Beaufort County 2013 General Obligation Bonds

2012B GO Bonds

Beaufort County Ordinance 2012/4 dated March 26, 2012, authorized \$2.5 million of General Obligation Bonds for purposes of the acquisition of Southern County Office Space located in Bluffton, SC, known as Myrtle Park.

2013 BAN

Beaufort County Ordinance 2012/12 dated September 24, 2012, authorized \$5 million of General Obligation Bond Anticipation Notes (BAN) for purposes of County Courthouse Renovations, Coroner's Office Renovations and Southern County Office Space (Myrtle Park) Renovations.

2013A GO Bonds

Beaufort County Ordinance 2013/15 dated April 8, 2013, authorized an amount not to exceed \$7.6 million of General Obligation Bonds for purposes of refunding (refinancing) the above referenced debt instruments.

The Bond Proceeds in the amount of \$7.5 million provided for the following projects to be completed as follows:

Bond Proceeds	\$ 7,500,000
Interest Earned	<u>88,225</u>
Total Funding Sources (Revenues)	\$ 7,588,225
County Courthouse Renovations	\$ 3,871,841
Southern County Office Space (Myrtle Park)	3,053,184
Coroner's Office Renovations	<u>224,191</u>
Total Funding Uses (Expenditures)	\$ 7,149,216
Excess of Revenues over Expenditures	<u><u>\$ 439,009</u></u>



COUNTY COUNCIL OF BEAUFORT COUNTY

PURCHASING DEPARTMENT

106 Industrial Village Road, Bldg. 2, Post Office Drawer 1228
Beaufort, South Carolina 29901-1228

David L Thomas, Purchasing Director

dthomas@bcgov.net 843.255.2353

TO: Councilman Stu Rodman, Chairman, Public Facilities Committee

FROM: David L Thomas. CPPO. Purchasing Director

SUBJ: State Contract Purchase

Request to Purchase Two Dump Trucks for Beaufort County's Stormwater Infrastructure Section

DATE: 11/09/2017

BACKGROUND:

The Purchasing Department received a request from the Public Works Director to purchase two 2018 dump trucks from Carolina International Trucks, Inc., a State contract vendor. The new equipment is a replacement for two dump trucks assigned to the Stormwater Infrastructure Section, with dump truck #23141 having over 140,000 miles of operation and dump truck #23105 having over 149,000 miles of operation. Both trucks are included in the equipment replacement schedule. The cost to purchase both is included in the current Stormwater Utility budget. The section utilizes the dump trucks to haul materials, aggregate supplies, and debris. The old vehicles will be sold on GovDeals.

VENDOR INFORMATION:

Carolina International Trucks, Inc., Columbia, SC, (2 x 158,654.26)

COST:

\$317,308.52

SC State Tax (2 x \$500)

\$ 500.00

Total Cost*

\$318,308.52

FUNDING:

*Includes International tractor and installation of ox body purchased from Truck Bodies and Equipment International, Inc.

Account #50250011-54000, Stormwater Utility Enterprise Fund Vehicle Purchases. The Stormwater Utility Enterprise Fund began Fiscal Year 2018 with a total fund balance of \$9.76 million.

Funding approved: By: Date:


FOR ACTION:

Public Facilities Committee meeting on December 18, 2017.

RECOMMENDATION:

The Purchasing Department recommends that the Public Facilities Committee approve and recommend to County Council the contract award of \$318,308.52 to purchase two dump trucks from the aforementioned vendor in support of Stormwater Infrastructure operations.

Attachment:

 Recommendation Ltr Attach Stormwater Dump Trucks 2017.pdf
1.69 MB

cc: Joshua Gruber, Interim County Administrator

Approved: Date:

Check to override approval: ☐ Overridden by:

Override Date:

Alicia Holland, Assistant County Administrator, Finance

Approved: Date:

Eric Larson, Director, Environmental Engineering & Land Mar

Approved: Date:

Check to override approval: ☐ Overridden by:

Override Date:

ready for admin: ☒

David Wilhelm, Director, Public Works Department

Approved: Date:

Check to override approval: ☐ Overridden by:

Override Date:

ready for admin: ☒

After Initial Submission, Use the Save and Close Buttons



Hx620 6x4

Sales Proposal For:
Beaufort County

Presented By:
CAROLINA INTERNATIONAL TRUCKS, INC

Prepared For:
 Beaufort County
 Isaiah Smalls
 100 Ribaut Road
 Beaufort, SC 29901-
 (843)470 - 2735
 Reference ID: N/A

Presented By:
 CAROLINA INTERNATIONAL TRUCKS, INC
 Keith Willett
 1619 BLUFF RD
 COLUMBIA SC 29201 -
 (803)799-4923

Thank you for the opportunity to provide you with the following quotation on a new International truck. I am sure the following detailed specification will meet your operational requirements, and I look forward to serving your business needs.

Model Profile
2018 HX620 6x4 (HX62F)

APPLICATION:	Construction Dump
MISSION:	Requested GVWR: 72000. Calc. GVWR: 77220 Calc. Start / Grade Ability: 24.51% / 2.50% @ 55 MPH Calc. Geared Speed: 85.4 MPH
DIMENSION:	Wheelbase: 215.00, CA: 146.00, Axle to Frame: 65.00
ENGINE, DIESEL:	{Cummins X15 485} Performance Series, EPA 2017, 485 HP @ 1950 RPM, 1650 lb-ft Torque @ 1150 RPM, 2000 RPM Governed Speed, 497 Peak HP (Max)
TRANSMISSION, AUTOMATIC:	{Allison 4500_RDS_P} 5th Generation Controls; Wide Ratio, 6-Speed, with Double Overdrive; On/Off Hwy; Includes Oil Level Sensor, with PTO Provision, Less Retarder
CLUTCH:	Omit Item (Clutch & Control)
AXLE, FRONT NON-DRIVING:	{Meritor MFS-18-133A} Wide Track, I-Beam Type, 18,000-lb Capacity
AXLE, REAR, TANDEM:	{Meritor RT-46-160P} Single Reduction, 46,000-lb Capacity, with Lube Pump, Driver Controlled Main Locking Differential in Rear-Rear Axle, 200 Wheel Ends Gear Ratio: 4.30
CAB:	Conventional
TIRE, FRONT:	(2) 315/80R22.5 Load Range L HSC1 (CONTINENTAL), 484 rev/mile, 68 MPH, All-Position
TIRE, REAR:	(8) 11R22.5 Load Range H HDC1 (CONTINENTAL), 488 rev/mile, 75 MPH, Drive
SUSPENSION, REAR, TANDEM:	{Hendrickson HMX-460-54} Walking Beam Type 54" Axle Spacing; 46,000-lb Capacity, with Rubber End Bushings, Transverse Torque Rods, Less Shock Absorbers
PAINT:	Cab schematic 100LX Location 1: 9219, Winter White (Std) Chassis schematic N/A

<u>Code</u>	<u>Description</u>
HX62F00	Base Chassis, Model HX620 6x4 with 215.00 Wheelbase, 146.00 CA, and 65.00 Axle to Frame.
1652	CROSSMEMBER, REAR Relocated to End of Frame
1AMS	CROSSMEMBER, FRAME TIE for Heavy Duty
1CGC	FRAME RAILS Heat Treated Alloy Steel (120,000 PSI Yield); 12.250" x 3.380" x 0.375" (304.8mm x 85.6mm x 9.5mm); 550.0" (13970mm) Maximum OAL
1GTA	REINFORCEMENT, PINTLE HOOK Ahead of Rear Crossmember for Pintle Hook
1LEH	LICENSE PLATE HOLDER Single Plate, Swing Type, Mounted Below Front Bumper
1LTE	BUMPER, FRONT Full Width, Formed Stainless Clad Aluminum, Bright Finish
1VBC	TOW PIN, FRONT Heavy Duty; 150,000-lb. Total Capacity
1WXL	WHEELBASE RANGE 191" (485cm) Through and Including 236" (600cm)
2ARZ	AXLE, FRONT NON-DRIVING {Meritor MFS-18-133A} Wide Track, I-Beam Type, 18,000-lb Capacity
3ADG	SUSPENSION, FRONT, SPRING Parabolic, Taper Leaf, 18,000-lb Capacity; with Shock Absorbers
4091	BRAKE SYSTEM, AIR Dual System for Straight Truck Applications
	<u>Includes</u>
	: BRAKE LINES Color and Size Coded Nylon
	: DRAIN VALVE Twist-Type
	: DUST SHIELDS, FRONT BRAKE
	: DUST SHIELDS, REAR BRAKE
	: GAUGE, AIR PRESSURE (2) Air 1 and Air 2 Gauges; Located in Instrument Cluster
	: PARKING BRAKE CONTROL Yellow Knob, Located on Instrument Panel
	: PARKING BRAKE VALVE For Truck
	: QUICK RELEASE VALVE On Rear Axle for Spring Brake Release: 1 for 4x2, 2 for 6x4
	: SLACK ADJUSTERS, FRONT Automatic (with Air Cam Brakes)
	: SLACK ADJUSTERS, REAR Automatic (with Air Cam Brakes)
	: SPRING BRAKE MODULATOR VALVE SR-7 with relay valve for 6x4/8x6
	: SWITCH, AUXILIARY Interrupter for Cab Clearance/Marker Lights (Blinks Lights with Headlight Switch in "ON" Position); Instrument Panel Mounted
4193	BRAKES, FRONT, AIR CAM 16.5" x 6", Includes 24 SqIn Long Stroke Brake Chambers
4619	TRAILER CONNECTIONS Four-Wheel, with Hand Control Valve and Tractor Protection Valve, for Straight Truck
4732	DRAIN VALVE {Berg} with Pull Chain, for Air Tank
4AZJ	AIR BRAKE ABS {Bendix AntiLock Brake System} Full Vehicle Wheel Control System (4-Channel) with Automatic Traction Control
4EBD	AIR DRYER {Meritor Wabco System Saver 1200} with Heater
4EXU	BRAKE CHAMBERS, REAR AXLE {Bendix EverSure} 30/30 Spring Brake
4EXV	BRAKE CHAMBERS, FRONT AXLE {Bendix} 24 SqIn
4JBR	BRAKES, AIR CAM, PUSHER AXLE S-Cam; 15" x 4.0"; Includes MGM 20 Sq.In. Brake Chambers; Furnished with One Pusher Lift Axle
4NDB	BRAKES, REAR, AIR CAM S-Cam; 16.5" x 7.0"; Includes 30/30 Sq.In. Long Stroke Brake Chamber and Spring Actuated Parking Brake
4SPA	AIR COMPRESSOR {Cummins} 18.7 CFM Capacity
4VGN	AIR TANK Painted Aluminum, with Straight Thread O-Ring Ports

<u>Code</u>	<u>Description</u>
4WCC	BRAKE PACKAGE, FRONT {Dana Spicer ES-165-6} Air, Cam Type, Extended Service; Size 16.5" x 6", Includes Automatic Slack Adjusters
4WCD	BRAKE PACKAGE, REAR {Dana Spicer ES-165-7} Air, Cam Type, Extended Service; Size 16.5" x 7", Includes Automatic Slack Adjusters
4WDN	DUST SHIELDS, REAR BRAKE Omit Item
4WDW	BRAKE CHAMBERS, SPRING on Rear/Rear Axle Located Inside Rear Tire Envelope (Meets Asphalt Spreader/Paver Clearance Requirements)
5710	STEERING COLUMN Tilting and Telescoping
5CAW	STEERING WHEEL 4-Spoke; 18" Dia., Black
5PTB	STEERING GEAR (2) {Sheppard M100/M80} Dual Power
7BES	AFTERTREATMENT COVER Polished Aluminum
7BLJ	EXHAUST SYSTEM Single Horizontal Aftertreatment Device, Frame Mounted Right Side Under Cab; Includes Single Vertical Tail Pipe & Guard, Right Side, Cab Mounted
7SAP	ENGINE COMPRESSION BRAKE {Cummins} Interbrake For Cummins Signature/ISX/X15 Engines; Furnished with Engine
7WBA	TAIL PIPE (1) Turnback Type, Bright, for Single Exhaust
7WBU	EXHAUST HEIGHT 11' 6"
7WDN	MUFFLER/TAIL PIPE GUARD (1) Non-Bright Aluminum
8000	ELECTRICAL SYSTEM 12-Volt, Standard Equipment
	<u>Includes</u>
	: HAZARD SWITCH Integral with Turn Signal Switch
	: HEADLIGHT DIMMER SWITCH Integral with Turn Signal Lever
	: PARKING LIGHT Integral with Front Turn Signal and Rear Tail Light
	: STARTER SWITCH Electric, Key Operated
	: STOP, TURN, TAIL & B/U LIGHTS Dual, Rear, Combination with Reflector
	: TURN SIGNAL SWITCH Manual Cancelling with Lane Change Feature
	: TURN SIGNALS, FRONT Includes Integral Reflectors and Side Marker Lights; Fender Mounted
	: WINDSHIELD WIPER SWITCH 2-Speed with Wash and Intermittent Feature, Steering Column Mounted
	: WINDSHIELD WIPERS Single Motor, Electric, Cowl Mounted
	: WIRING, CHASSIS Color Coded and Continuously Numbered
8554	TRAILER CONNECTION SOCKET 7-Way; Mounted at Rear of Frame
8685	HORN, AIR (2) Single Bell, Long Chrome
8718	POWER SOURCE Cigar Type Receptacle without Plug and Cord
8GGN	ALTERNATOR {Bosch LH160} Brush Type, 12 Volt 160 Amp. Capacity, Pad Mount
8HAB	BODY BUILDER WIRING Back of Standard Cab at Left Frame or Under Extended or Crew Cab at Left Frame; Includes Sealed Connectors for Tail/Amber Turn/Marker/ Backup/Accessory Power/Ground and Sealed Connector for Stop/Turn
8MKL	BATTERY SYSTEM {International} Maintenance-Free, (3) 12-Volt 1950CCA Total
8RMA	RADIO AM/FM/WB/Clock/Bluetooth/USB Input/3MM Auxiliary Input, MP3, Apple Device Play & Control, Bluetooth for Phone & Music, with Multiple Speakers
8RMG	ANTENNA BASE (2) Single Function, (1) for CB and (1) for Entertainment Radio, without Splitter, Separate Lead-Ins, with CB Antenna Mounted on Left Mirror and AM/FM Antenna Mounted on Right Mirror
8VAY	HORN, ELECTRIC Disc Style

<u>Code</u>	<u>Description</u>
8VUK	BATTERY BOX Aluminum with Plastic Cover, 18" Wide, 2, 3, or 4 Battery Capacity, Mounted Right Side Back of Cab
8WCK	POWER SOURCE, TERMINAL TYPE 2-Post
8WXG	STARTING MOTOR {Mitsubishi Electric Automotive America 105P} 12-Volt, with Soft-Start
8XAH	CIRCUIT BREAKERS Manual-Reset (Main Panel) SAE Type III with Trip Indicators, Replaces All Fuses
8XHT	HEADLIGHTS Halogen, Composite Combination
9AAB	LOGOS EXTERIOR Badges
9ASE	FRONT END Tilting Composite
9HCL	GRILLE , Black Vertical Accent Bars with Black Mesh
10060	PAINT SCHEMATIC, PT-1 Single Color, Design 100
	<u>Includes</u> : PAINT SCHEMATIC ID LETTERS "LX"
10761	PAINT TYPE Base Coat/Clear Coat, 1-2 Tone
11001	CLUTCH Omit Item (Clutch & Control)
12703	ANTI-FREEZE Red, Extended Life Coolant; To -40 Degrees F/ -40 Degrees C, Freeze Protection
12ELC	ENGINE, DIESEL {Cummins X15 485} Performance Series, EPA 2017, 485 HP @ 1950 RPM, 1650 lb-ft Torque @ 1150 RPM, 2000 RPM Governed Speed, 497 Peak HP (Max)
12THT	FAN DRIVE {Horton Drivemaster} Direct Drive Type, Two Speed with Residual Torque Device for Disengaged Fan Speed
12UCU	RADIATOR Aluminum; Front to Back, Down Flow System, 1564.8 SqIn, 556.8 SqIn CAC
12UNU	FEDERAL EMISSIONS {Cummins X15} EPA, OBD and GHG Certified for Calendar Year 2017
12VBG	AIR CLEANER Dual Element, with Integral Pre Cleaner
12WCX	HOSE CLAMPS, RADIATOR HOSES {Gates} Shrink Band Type
12WTA	FAN DRIVE SPECIAL EFFECTS Fan Cooling Ring with Fan Shroud Effects, Engine Mounted
12WZE	EMISSION COMPLIANCE Federal, Does Not Comply with California Clean Air Idle Regulations
13AUW	TRANSMISSION, AUTOMATIC {Allison 4500_RDS_P} 5th Generation Controls; Wide Ratio, 6-Speed, with Double Overdrive; On/Off Hwy; Includes Oil Level Sensor, with PTO Provision, Less Retarder
13WBL	TRANSMISSION SHIFT CONTROL {Allison} Push-Button Type; for Allison 3000 & 4000 Series Transmission
13WCU	OIL COOLER, AUTO TRANSMISSION {Modine} Remote Mounted; Not for use with Retarder
13WLM	TRANSMISSION OIL Synthetic; 63 thru 76 Pints
13WUC	ALLISON SPARE INPUT/OUTPUT for Rugged Duty Series (RDS); General Purpose Trucks, Construction
13WVD	PTO CONTROL, DASH MOUNTED For Customer Provided PTO; Includes Control Valve, Piping and Wiring, Wired for PTO
13WYU	SHIFT CONTROL PARAMETERS Allison 3000 or 4000 Series Transmissions, 5th Generation Controls, Performance Programming
14862	PDL WARNING BUZZER Power Divider Lock
14GRS	AXLE, REAR, TANDEM {Meritor RT-46-160P} Single Reduction, 46,000-lb Capacity, with Lube Pump, Driver Controlled Main Locking Differential in Rear-Rear Axle, 200 Wheel Ends . Gear Ratio: 4.30

<u>Code</u>	<u>Description</u>
14RAA	AXLE, LIFT, CONTROLS for One Lift Axle; All Controls Inside Cab; Includes Pressure Gauge, Pressure Regulator and Lift/Lower Switch
14UAB	AXLE SPACING, FIRST PUSHER 49" Ahead of Drive Axle
14ULY	SUSPENSION, REAR, TANDEM {Hendrickson HMX-460-54} Walking Beam Type 54" Axle Spacing; 46,000-lb Capacity, with Rubber End Bushings, Transverse Torque Rods, Less Shock Absorbers
14WAL	SUSPENSION/REAR-AXLE IDENTITY for Meritor Tandem Rear Axles with Bar-Pin Beam Attachment Type Suspensions
14WMK	AXLE, REAR, LUBE {EmGard FE-75W-90} Synthetic Oil; 65 thru 89.99 Pints
14WNH	AXLE, PUSHER, LIFT TYPE {Watson & Chalin SL1190SSR Tru-Trk Alumilite} 13,500-lb Capacity; Includes One Self-Steer Axle
15BAA	DEF TANK COVER Stainless Steel
15DYP	DEF TANK 9.5 U.S. Gal. 35.9L Capacity, Frame Mounted Outside Left Rail, Under Cab
15LKU	FUEL/WATER SEPARATOR {Racor} Fuel Pre-Filter and Filter Base, Includes Water-In-Fuel Sensor
15SWH	FUEL TANK Top Draw; Polished Aluminum, 26" Diam., 100 U.S. Gal., 378 L Capacity Mounted Left Side Under Cab
16031	CAB Conventional
	<u>Includes</u>
	: CLEARANCE/MARKER LIGHTS (5) LED Roof Mounted
	: COAT HOOK, CAB Located on Rear Wall, Centered Above Rear Window
	: CONSOLE, CENTER Includes Two Cup Holders with Ash Cup and One Additional Storage Area
	: GLASS, ALL WINDOWS Tinted
	: GRAB HANDLE, CAB INTERIOR (2) One Each Side
	: GRAB HANDLE, EXTERIOR (2) Mounted Behind Driver and Passenger Doors
	: SPEAKERS IN CAB (4) Two Located in B-Pillar, Two Located Overhead on Driver and Passenger Sides
	: STEP (4) Two Steps Per Door
16HBA	GAUGE CLUSTER English with English Electronic Speedometer
16HLC	GAUGE, AIR CLEANER RESTRICTION {Filter-Minder} Mounted in Instrument Panel
16JPD	SEAT, DRIVER {National 2000 Model 195} Air Suspension, High Back, Vinyl Boxing with Cloth Facing, 2 Arm Rests, Isolator, Adjuster, 3 Chamber Lumbar, 6 Position Front Cushion Adjust, 3 Position Rear Cushion Adj, 2-15 Degree Back Angle Adjust, Vinyl Suspension Cover
16RAN	SEAT, PASSENGER {National 2000 Model 192} Non Suspension, High Back, Vinyl Boxing with Cloth Facing, 11 Degree Back Angle Adjust
16SNR	MIRRORS (2) Power Adjust, Thermostatically Controlled Heated Heads, LED Clearance Lights, Bright Finish Heads and Arms, Black Brackets, 7.55" x 14.1" Flat Glass, 7.48" x 6.77" Convex Glass Both Sides
16SNY	MIRROR, CONVEX, HOOD MOUNTED Right and Left Sides; 7.48" x 6.77" Convex Glass, Bright
16VJZ	CAB INTERIOR TRIM Classic, for HX Day Cab
	<u>Includes</u>
	: CONSOLE, OVERHEAD Molded Plastic with Three Storage Pockets; One with Velcro Strap for CB Radio Mounting; Two with Netting; Light Switches for Dome and Courtesy Lights
	: FLOOR COVERING Rubber, Black
	: SUN VISOR (2) Vinyl with Toll Ticket Strap
16VRT	HEATER, ENHANCED CIRCULATION {Bergstrom} Control, for Extreme Cold Weather Climates
16VZA	WINDOW, REAR 52.25" Wide
16WAK	WINDOW, POWER (2) in Left and Right Doors

<u>Code</u>	<u>Description</u>
16WJG	CAB DOOR LOCKS Power
16WKB	AIR CONDITIONER {International Blend-Air} with Integral Heater & Defroster
16WKR	WINDSHIELD Single Piece
16WLD	CAB REAR SUSPENSION Dual Frame Mounted Cab Rear Air Suspension; Includes Special Crossmember Assembly
16XWE	SUNSHADE, EXTERIOR Bright Finish; Includes Integral Clearance/Marker Lights
16ZDU	GRAB HANDLE Exterior; Towel Bar Type In Lieu Of Non-Bright Grab Handles; for use with Cab or Cab/Sleeper Non-Bright Access, without Frame Access or Chassis Skirts
27DUR	WHEELS, FRONT {Accuride 41730} DISC; 22.5x9.00 Rims, Standard Polish Aluminum, 10-Stud, 285.75mm BC, Hub-Piloted, Flanged Nut, with Steel Hubs
28DTJ	WHEELS, REAR {Maxion 90541} DUAL DISC; 22.5x8.25 Rims, Painted Steel, 2-Hand Hole, 10-Stud, 285.75mm BC, Hub-Piloted, Flanged Nut, with Steel Hubs
29PAS	PAINT IDENTITY, REAR WHEELS Disc Rear Wheels; with Vendor Applied White Powder Coat Paint
34ACJ	WHEELS, LIFT AXLE PUSHER {Accuride 51408} Single Wheels, For One Lift Axle; 22.5x8.25 Rims, Powder Coat Steel, 2-Hand Hole, 10-Stud, 285.75mm BC, Hub-Piloted, Flanged Nut <<Pricing Includes Standard Tires>>
7382135419	(2) TIRE, PUSHER 11R22.5 Load Range H HSC1 (CONTINENTAL), 496 rev/mile, 75 MPH, All-Position
7382135420	(8) TIRE, REAR 11R22.5 Load Range H HDC1 (CONTINENTAL), 488 rev/mile, 75 MPH, Drive
7792545419	(2) TIRE, FRONT 315/80R22.5 Load Range L HSC1 (CONTINENTAL), 484 rev/mile, 68 MPH, All-Position

Services Section:

40124	WARRANTY Standard for HX Series, Effective with Vehicles Built December 7, 2015 or Later, CTS-2015A
40SHT	SRV CONTRACT, EXT CMMS ENGINE {Cummins} To 60-Month/100,000 Miles (160,000 km), Extended Cummins X15 Performance Series, Engine Coverage, Protection Plan 1
40SJG	SRV CONTRACT, EXT CMMS AFTR {Cummins} To 60-Month/100,000 Miles (160,000 km), Extended Cummins X15 Performance Series Aftertreatment Coverage, for Use when Protection Plan 1 of Equal or Greater Duration is Purchased
1	OX BODY WITH HI-LIFT GATE ,TARP ,AND VIBRATOR
	STATE CONTRACT FEE

<u>Description</u>	(US DOLLAR)	<u>Price</u>
Factory List Prices:		
Product Items	\$249,162.00	
Service Items	\$4,300.00	
Total Factory List Price Including Options:		\$253,462.00
Total Goods Purchased:		\$985.00
Heavy/Severe Service -	\$500.00	
PDI,DOT,SAFETY		
EQUIP,FUEL,FLAPS,DELIVERY,WAS		
H		
Lot Charge-Heavy	\$500.00	
Total Preparation And Delivery:		\$1,000.00
Freight	\$2,200.00	
Total Freight:		\$2,200.00
Total Factory List Price Including Freight:		\$257,647.00
Less Customer Allowance:		(\$123,285.74)
Total Vehicle Price:		\$134,361.26
Total Body/Allied Equipment:		\$24,293.00
Total Sale Price:		\$158,654.26
Total Per Vehicle Sales Price:		\$158,654.26
Total Net Sales Excluding Taxes:		\$158,654.26
SC State Sales Tax	\$500.00	
Total Taxes:		\$500.00
Net Sales Price:		\$159,154.26

Please feel free to contact me regarding these specifications should your interests or needs change. I am confident you will be pleased with the quality and service of an International vehicle.

Approved by Seller:

Accepted by Purchaser:

Official Title and Date

Firm or Business Name

Authorized Signature

Authorized Signature and Date

This proposal is not binding upon the seller without
Seller's Authorized Signature

Official Title and Date

The TOPS FET calculation is an estimate for reference purposes only. The seller or retailer is responsible for calculating and reporting/paying appropriate FET to the IRS.



COUNTY COUNCIL OF BEAUFORT COUNTY
PURCHASING DEPARTMENT

106 Industrial Village Road, Bldg. 2, Post Office Drawer 1228
 Beaufort, South Carolina 29901-1228

David L Thomas, Purchasing Director
 dthomas@bcgov.net 843.255.2353

TO: Councilman Stu Rodman, Chairman, Public Facilities Committee

FROM: David L Thomas. CPPO. Purchasing Director

SUBJ: State Contract Purchase
 Request to Purchase a Replacement Excavator for Beaufort County's Public Works Department, Stormwater Section

DATE: 11/08/2017

BACKGROUND:

The Purchasing Department received a request from the Director Public Works to purchase one new 2018 CAT Model 315F Excavator from Blanchard CAT, Columbia, SC, a certified National Joint Powers Association Cooperative Contract (NJPA) vendor. The new equipment is a replacement for a 2009 JCB JZ140 assigned to Public Works Department Stormwater Section, with over 4,896 Hours of operation. The Stormwater Section utilizes the excavator to install underground infrastructure, clean channels, remove debris, etc. Total cost of \$162,782.00 includes all discounts, delivery, SC sales tax; manuals, cleaning bucket, and a three year/3500 hour powertrain and hydraulics warranty (see the attached price quote).

VENDOR INFORMATION:

Blanchard CAT, Inc., Columbia, SC

COST:

\$162,782

FUNDING:

Account #50250011-54200, Stormwater Utility Enterprise Fund Specialized Capital Equipment. The Stormwater Utility Enterprise Fund began Fiscal Year 2018 with a total fund balance of \$9.76 million.


Funding approved: By: Date:

FOR ACTION: Public Facilities Committee meeting on December 18, 2017.

RECOMMENDATION:

The Purchasing Department recommends that the Public Facilities Committee approve and recommend to County Council the contract award of \$162,782 to purchase one new 2018 CAT Model 315F Excavator from the aforementioned vendor in support of Public Works, Stormwater operations.

Attachment:

 Recommendation Ltr Attachment Excavator Stormwater 11082017.pdf
815.79 KB

cc: Joshua Gruber, Interim County Administrator

Approved: Date:

Check to override approval: ☐ Overridden by:

Override Date:

Alicia Holland, Assistant County Administrator, Finance

Approved: Date:

Approved: Date:

Check to override approval: ☐ Overridden by:

Override Date:

ready for admin: ☒

Approved: Date:

Check to override approval: ☐ Overridden by:

Override Date:

ready for admin: ☒

After Initial Submission, Use the Save and Close Buttons

BEAUFORT COUNTY GOVERNMENT-
PUBLIC WORKS & MAINTENANC
120 SHANKLIN ROAD
BEAUFORT, SC 29901

October 13, 2017

Attention: CHAD STANLEY

Dear Chad,

We would like to thank you for your interest in our company and our products, and are pleased to quote the following for your consideration.

One (1) New Cat Model: 315F Excavators with all standard equipment in addition to the additional specifications listed below:

One (1) New Cat Model: 315F Excavators with all standard equipment in addition to the additional specifications listed below:

STANDARD EQUIPMENT

POWERTRAIN - Diesel engine C4.4 certified to - EPA Tier4 final, EU Stage IV, - Japan MLIT Step 5 - 2300m/7550ft altitude capability - w/ no derate - Waved fin radiator w/ enough space - for cleaning operation (2SBS) - Radial seal air filter - Fuel water separator w/ level indicator - Capability of - - EIS (Engine Idle Shutdown) function - - Using Bio-Diesel fuel (B20) - Air cleaner with integrated precleaner, - double element

UNDERCARRIAGE - Grease lubricated track GLT1, resin seal - Towing eye for diagonal lashing - on base frame -

HYDRAULICS - Hydraulic main pump - Regeneration circuit for boom and stick - Two speed travel - Capability of installing - - Additional auxiliary pump & circuit - - CAT Bio hydraulic oil - Boom Drift Reduction Valve - in case of engine shut down - High performance hyd. return filter -

ELECTRICAL - Circuit breaker - Electrical connector for a beacon - *Requires additional hardware (Relay, - Switch, Beacon, and Electric Harness) - Light, storage box mounted (one) halogen - Time delay function for boom light - and cab light -

OPERATOR ENVIRONMENT - Cab: - - Bolt-on FOGS capability - - Openable front windshield w/ assist - device (except for one piece - windshield) - - Pillar mounted upper windshield - wiper and washer - - Cab sliding upper door window - - Rear window - - Removable lower windshield - w/ in cab storage bracket - - Openable skylight - Operators Station: - - Interior lighting - - Coat hook - - Beverage holder with slit - - Literature holder - - Utility space for magazine - - Radio mounting (DIN size) - - Mounting for two stereo speakers - (two locations) - - Storage compartment suitable - for lunch box - and small storage pocket for - MP3 Player, Cellular Phone - - Door & cap locks - - 24V radio ready (harness, - two speakers, antenna-flexible type) - - 12V-5A power supply - w/ cigar lighter type socket - Monitor: - - Single axis adjustable monitor - (horizontal only) - - Full graphic and full color display - - Inform Warning, Filter/fluid change, - - Working hour, Machine condition, - - Error code and tool mode setting - Seat: - - Console height adjustment system - - Armrest height adjustment system - - Electrical provision for seat - heater/ ventilator - Pedal: - - Capability of installing - RH additional pedal - - Travel control pedals - with removable hand levers - - Neutral lever (lock out) for - all controls -

SAFETY AND SECURITY - Caterpillar one key security system - Secondary engine shutoff switch - Signaling / warning horn - Handrail

OTHER STANDARD EQUIPMENT - Capability of installing - - Stackable valves for main valve - (max 2 valves) - - Block heater for cold start - - Boom lowering control device - and stick lowering check valve - Adopt CAT data link w/ capability of - using E.T. - Automatic swing parking brake - Fine swing control capability - Mirrors, rearview (frame -right) -

MACHINE SPECIFICATIONS

Description

315FL BLADE QC 36"BKT

3.0M (9'10") Stick, Tool Control, 600mm (24") Track, Blade

INCLUDES:

465-6097 315F L HEX
 459-9556 FRAME, SWING
 461-2810 AIR CONDITIONER
 375-5660 COOLING, HIGH AMBIENT
 488-6543 SEAT BELT, 51MM (2") RETRACTABLE
 464-9323 BATTERY, STANDARD
 284-4491 MIRROR, CAB LEFT
 327-6559 MIRROR, W/O GUARD
 466-1038 HOOD, ENGINE
 362-4326 GUARD, BOTTOM, STANDARD
 169-7904 GUARD, TRACK MOTOR
 120-7199 GUARD, TRACK GUIDING, CENTER
 420-3840 FRAME, BASE, LONG U/C BLADE
 362-4343 COUNTERWEIGHT, 3.6TON (7,940 LBS)
 340-8203 TRACK, 600MM (24") TG (GLT)
 357-4081 CAB-ROPS,70/30 W/VANDAL G-BOSS
 459-1241 SEAT, H-BACK, W/HEATER,S/AIR
 372-9578 WINDOW, REAR, DUAL EXIT
 360-6189 PANEL, STD START SWITCH
 465-6145 RADIO, 24V AM/FM
 359-2563 KEY
 352-7158 ACCUMULATOR WITH CRN
 467-1396 CAMERA REAR VIEW W/GRDRAIL
 503-0851 TANK, FUEL
 435-8180 SWIVEL, BLADE
 431-0397 CONTROL, FINE SWING
 473-4122 COVER, TANK STANDARD
 458-3785 LINES-FRONT, STD W/ PGQC
 394-7475 STICK, R3.0M (9'10") HD
 316-3790 SUPPORT, AUX LINES, R-BOOM
 370-0217 LINES-HP, REACH BOOM TCS
 371-0116 LINES-QC, REACH BOOM
 372-9668 LINES-HP, R3.0M (9'10") STICK
 393-8771 LINES-QC, R3.0M (9'10") STICK
 500-9174 CTRL, CAT PIN GRABBER COUPLER
 282-4579 BLADE, 2600MM (8'6")
 461-1667 CONTROL, BLADE, W/PUMP
 275-7114 LIGHT, BOOM RIGHT SIDE

Description

360-6276 LIGHTING, CAB (HALOGEN)
 369-0002 ALARM, TRAVEL
 466-3359 CHANGER,HAND CTRL 2-WAY
 462-8661 PRODUCT LINK, CELLULAR PL641
 473-7017 DECALS, EXTERIOR ANSI
 473-7132 DECALS, CAB ANSI
 385-2832 CYLINDER, BKT
 383-2513 LINKAGE, BKT W/O LIFT
 499-3898 REACH BOOM HD PKG
 BOOM, REACH 4.65M (15'3") HD
 CYLINDER, BOOM (W/O BLCV)
 CYLINDER, STICK (W/O SLCV)
 418-4318 COMBINED CIR PKG
 JOYSTICK, THUMB WHEEL
 MAT, FLOOR
 CIRCUIT, COMBINED
 499-3901 VALVE PKG, HYD TCS
 VALVE, HYDRAULIC TCS
 PLATFORM, STD
 HARNESS, PLATFORM STD
 LINES-PILOT, PLATFORM TCS
 LINES-PILOT, CL R-BOOM TCS
 LINES-PILOT, INITIAL CIR. ATT

ROLL ON-ROLL OFF LANE1 A
 STORAGE PROTECTION (EXPORT)
 INSTRUCTIONS, ENGLISH
 INSTRUCTION,NORTH AMERICA ANSI
 LANE 1 ORDER
 PIN GROUP, SPARE
 BUCKET-GD, 36" 0.69 YD3
 COUPLER, HYDRAULIC PIN GRABBER
 LINES, CONNECTOR, PIN GRABBER
 TIP, LONG,HEAVY DUTY
 BUCKET-DC, 60" 1.22 YD3
 THUMB GP
 BRACKET GP
 CONNECTOR LINES, THUMB

SELL PRICE	162,282
EXT WARRANTY	Included
NET BALANCE DUE	162,282
AFTER TAX BALANCE	162,782

WARRANTY

Standard Warranty:	12 Months - Unlimited
Extended Warranty:	3 year/3500 Powertrain + Hydraulics

This quotation is valid for 30 days, after which time we reserve the right to re-quote. If there are any questions, please do not hesitate to contact me.

Sincerely,

Ryan Luthren
Machine Sales Representative

Accepted by _____ on _____

Signature



COUNTY COUNCIL OF BEAUFORT COUNTY

PURCHASING DEPARTMENT

106 Industrial Village Road, Bldg. 2, Post Office Drawer 1228
Beaufort, South Carolina 29901-1228

David L Thomas, Purchasing Director
dthomas@bcgov.net 843.255.2353

TO: Councilman Stu Rodman, Chairman, Public Facilities Committee

FROM: David L Thomas. CPPO. Purchasing Director

SUBJ: New Contract as a Result of Solicitation

Request for Proposals (RFP) 102617E, School Zone Flasher Scope and Fee

DATE: 12/04/2017

BACKGROUND:

Beaufort County currently utilizes various time clock systems to provide on-site time of day schedules to all school flashers within Beaufort County. Beaufort County Traffic and Transportation Engineering Division (BCTE) desires to replace the existing time clocks and software at 15 locations (see breakdown below), and move toward a cloud-based software solution that provides remote two-way communications between BCTE staff and the time clocks. This will allow opportunity to better manage the existing flashers, monitor operations, respond quicker to citizen complaints and modify plans quickly and easily for changes in days and times (Saturday make-up days).

Beaufort County School Flashers to be included in the project:

1. St. Helena Elementary School (2 flashers)
2. Coosa Elementary School (2 flashers)
3. Beaufort Academy (2 flashers)
4. Whale Branch Middle and Elementary Schools (4 flashers)
5. Broad River Elementary School (2 flashers)
6. Riverview Charter School (2 flashers)
7. River Ridge Academy (4 flashers)
8. Bluffton Elementary School (2 flashers)
9. H.E. McCracken Middle School (2 flashers)
10. Cross Schools (2 flashers)
11. Bluffton Middle School along Buck Island Rd (2 flashers)
12. Bluffton Middle School along Simmonsville Rd (2 flashers)
13. MC Riley Elementary School (2 flashers)
14. Red Cedar Elementary School (2 flashers)
15. Port Royal Elementary School (2 flashers)

In October, 2017, Beaufort County Traffic Engineering requested proposals for a school flasher control system by way of RFP 102617E. The project involves the purchase of software, hardware, licenses, and technical assistance allowing for a complete overhaul of the current school flasher system. Only one proposal was received.

VENDOR INFORMATION:

Temple, Inc.

COST:

\$113,889.32

FUNDING:


County TAG Funds with an available uncommitted fund balance of \$1.6 million for new projects.

Funding approved: By: Date:

FOR ACTION: Public Facilities Committee meeting on December 11, 2017.

RECOMMENDATION:

The Public Facilities Committee approves and recommends to County Council approval of Temple Inc. scope and fee in the amount of \$108,466.02. Additionally, approve a project contingency of \$5,423.30, bringing the total budget to \$113,889.32 with funding as outlined above.

Attachment:  RFP 201617E Recommendation Ltr Attachments.pdf
4.56 MB

cc: Joshua Gruber, Interim County Administrator

Approved: Date:

Check to override approval: ☐ Overridden by:

Override Date:

Alicia Holland, Assistant County Administrator, Finance

Approved: Date:

Approved: Date:

Check to override approval: ☐ Overridden by:

Override Date: ready for admin: ☒

Approved: Date:

Check to override approval: ☐ Overridden by:

Override Date: ready for admin: ☒

Approved: Date:

Check to override approval: ☐ Overridden by:

Override Date: ready for admin: ☒

After Initial Submission, Use the Save and Close Buttons

Chapter 6 - Pricing Proposal

Description or submittal	Description of Pricing Model	MSRP	Beaufort Price	Increase per Renewal
Retrofit School Flasher Timers, AI 500-071	Initial Purchase of (28) Timer Switches @ \$1,384.69 ea.	N/A	\$ 38,771.32	3%
1 year Option of cellular service per Timer w/initial deployment	Recurring License priced as Lump License Cost for (34)	N/A	\$ 9,486.00	0%
1 year Option of cellular service for up to 4 annual renewals	Recurring License priced as Lump License Cost for (34)	N/A	\$ 9,486.00	0%
5 year Connectivity & Support Package w/Extended Warranty	Recurring License priced as Lump License Cost for (30)	N/A	\$ 32,667.20	0%
Options				
High Gain Antenna Kit, AI 3982 Stubby Antenna	Price Each Only in areas with Poor Cell Service	N/A	\$ 106.67	0%
Existing Carmanah Solar Modifications	Conversion of R829C 10W Systems to R829 20W Systems	N/A	\$ 22,345.00	0%
Replacement of R829 systems to R829G Series	Upgrading (3) locations to R829G Series	N/A	\$ 9,682.50	0%

****Installation Assistance included in above pricing**

Pricing Worksheet (Services)

Description or submittal	Description of Pricing Model	MSRP	Beaufort Price	Increase per Renewal
User Training	Cost of Training for Proposed Sample Project	N/A	\$ 5,000.00	0%
Field Support (hourly) - Post Installation	Hourly Costs for on-site Services, as needed	N/A	\$ 155.00	0%
Identification of locations for High Gain Antenna Kit	Cost of identifying HG locations for Sample Project	N/A	\$ -	0%

**** Installation Assistance included in Time Switch Price**

Pricing Worksheet (Maintenance)

Description or submittal	Description of Pricing Model	MSRP	Beaufort Price	Increase per Renewal
Annual Software Support and Website Access	Glance Software Subscription (Included in Time Switch Price)	N/A	\$ -	0%
Repair / Replacement of time switch	Replacement each (if 5 year Conn/Support/Warranty not purchased)	N/A	\$ 250.00	0%
Renewal of Connectivity Support Package per timer after 5 years	Renewal (each device)	N/A	\$ 1,090.00	0%

Temple, Inc. Response to REQUEST FOR PROPOSAL for

RFP 102617E School Flashers

School Flasher Control System, Licenses and Technical
Services – October 26, 2017

Submitted to



Submitted by



In partnership with



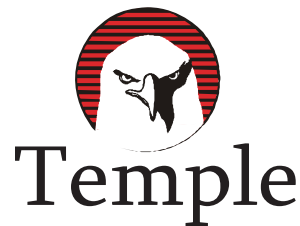
Integrity
Service
Relationships

Temple, Inc. PO Box 2066 Decatur, AL 35602 800.633.3221 www.temple-inc.com



Table of Contents

Chapter 1 Company Overview.....	Page 3
Certifications and Authorizations.....	Page 4
Management Approach.....	Page 5
Industry Innovations or Best Practices.....	Page 6
Chapter 2 Executive Summary.....	Page 8
Vendor Qualifications.....	Page 9
Financial Stability.....	Page 10
RFP Assumptions.....	Page 11
Chapter 3 Product Information.....	Page 12
Sample Project.....	Page 25
Maintenance and Support Strategy.....	Page 27
Training Strategy.....	Page 28
Chapter 4 Experience, Qualifications, and References.....	Page 30
Design Considerations.....	Page 34
Chapter 5 Sample Contracts.....	Page 37
Non-Collusion.....	Page 45
Chapter 6 Pricing Proposal.....	Separate PDF



Chapter 1

Company Overview

Since 1954, the people of Temple, Inc. have been focused on integrity, outstanding service, and relationships that endure. Our founders understood that product technologies change over time, but the relationships we've built over the last 63 years have determined our success. We remain committed to providing the most comprehensive traffic and ITS solutions available, matched with unrivaled service and support.

Today, Temple, Inc. employs over eighty (80) employees and occupies over 70,000 square feet of office and warehouse space at its facilities in Decatur, Alabama. Temple, Inc. has organized itself around the demands of municipalities and State organizations that it serves. Temple manufactures the CalTrans specification-style cabinets, the NEMA specification cabinets, as well as school and public safety devices, becoming the largest stocking distributor of traffic control products in the Southeast in order to address customer requirements.

Technical expertise has always been a goal for Temple, Inc. in all the products that we bring to market. Temple employs eight full-time service technicians, allows for toll-free customer assistance, and provides training seminars in Decatur and other regional areas by customer request. Temple Education Services provides formal technical training for a myriad of products, services, concepts, protocols, and troubleshooting practicum each October through March. For the last 25 years, substantial numbers of students from MDOT, GDOT, ALDOT, TNDOT, FDOT, AHTD, LADOTD, NCDOT, SCDOT, Municipal Agencies, and traffic signal and ITS contractors have attended the company's TES technical training courses.

Temple, Inc. is committed to customers across the Southeast, and continues to partner with companies/organizations that can assist the company with attaining the specific goals of its customers.

DUNS# 041021528

CAGE Code 1U7HS

NAICS Code 3249999



Temple, Inc. PO Box 2066 Decatur, AL 35602 800.633.3221 www.temple-inc.com

Certifications and Authorizations

Safety Awards/Recognitions

- Recipient of Business Council of AL Safety Award for Manufacturing
- 17 consecutive years (2000 – present)

IMSA Level Technicians

- Level I – One Field Technician
- Level II – Eight Field Technicians
- Level III – Two Field Technicians

UL Listed

- Manufacturing facility and processes
- Illuminated Street Name Signs

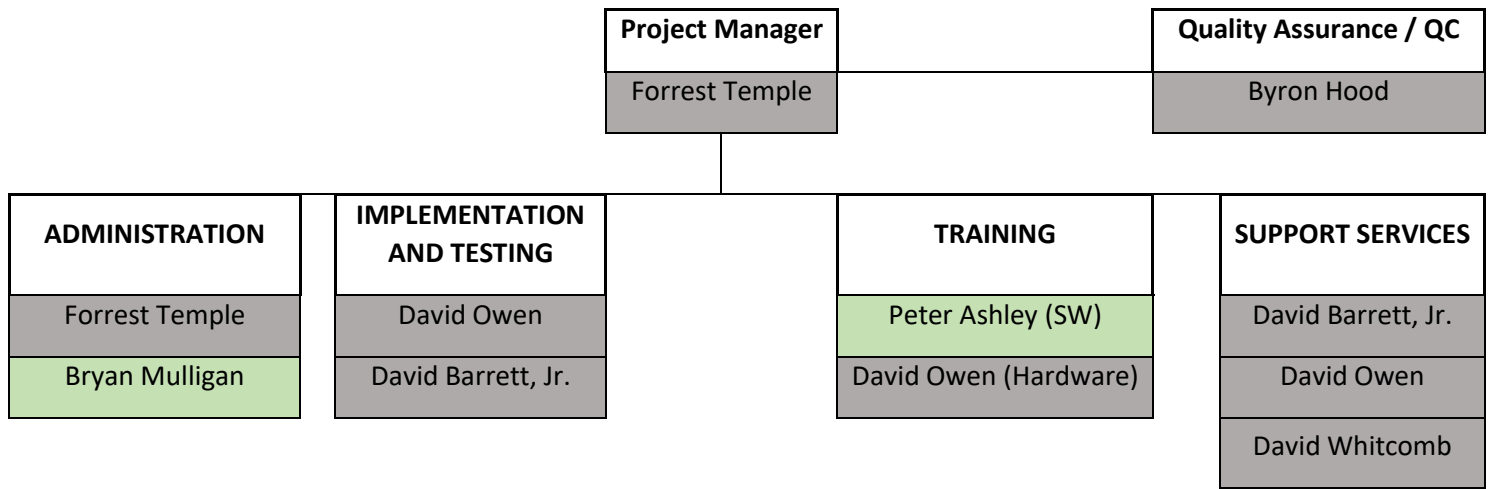
ISO 9001:2008 Compliant

Authorized Trainers Employed

- Two Authorized IMSA Trainers on Temple Staff

Industry Affiliations

- | | | |
|---------------------|-------------------------|------------------|
| - National ITE | - National IMSA | - National ITS |
| - Gulf Regional ITS | - Southern District ITE | - Deep South ITS |
| - Alabama ITE | - Georgia ITE | - Georgia ITS |
| - Tennessee ITE | - Tennessee ITS | - Carolinas ITS |

Temple, Inc. Management Approach**Project Management:**

The Management Approach that Temple, Inc. will be using for this project will be similar to how most of Temple/AI projects are managed. We will have (1) Project Manager (Forrest Temple) who will be responsible for maintaining the project schedule, once negotiated with the County. Forrest will ensure that our vendor partner, Applied Information, as well as our technical services team meet the RFP requirements. Internally, Forrest will oversee that the project is successful and will work with Applied Information (Bryan Mulligan) to ensure that delivery and configuration of the devices are completed with ample time prior to January 2018.

Point of Contact for the County:

Serving as Quality Assurance / Quality Control for this project will be Byron Hood. In order to ensure that the County is satisfied with Temple's proposed solution, Byron will be the main point of contact to the County. If issues arise during project implementation or the maintenance period, Byron will relay those issues to the project manager so that the project team can find a solution.

Implementation and Testing:

The personnel from Temple responsible for the retrofitting of the time switches into the existing locations will be David Owen and David Barrett, Jr. Both of these technicians are IMSA Level II certified and have overseen or installed over 500 Applied Information devices in Georgia, South Carolina and North Carolina.

Training (See Proposed Training Strategy Section of Proposal):

The personnel responsible for the training aspect of the project will be Peter Ashley with Applied Information as well as David Owen from Temple. Peter will put on a training program focused on the Glance Central System operation and explain in detail the features and functions of the software, while David focuses on integration and retrofit training for the County's personnel to get a full understanding of what's being offered in the project.

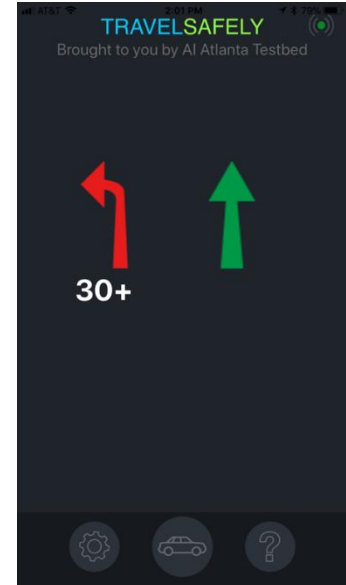
Support Services:

The support services team will be available to the County if any additional support is needed on the project. David Owen, David Barrett, Jr., and David Whitcomb will be resources for the County to utilize to make sure the County is 100% satisfied in the deployment of the project's deliverables and installation.

Industry Innovations of Temple / AI Team

With the partnering with Applied Information in 2014, Temple, Inc. has been involved in several innovative projects and products, while also being extremely involved in the traditional traffic and ITS markets. Applied Information not only produces devices such as School Zone Time Switches and Cabinet Monitoring Devices, they provide a myriad of innovative solutions such as:

- **Preemption / Priority** System using Cloud-Based technology with GPS
- Integration with **Driver Feedback Signage**
- **Weather Monitoring** Devices integrated into Cloud-Based Glance Software
- **Connected Vehicle Solution** – 3 ongoing projects being implemented now!
- **TravelSafely** App for Droid and iPhone (V2I, V2X Technology)
- **School Zones** + Cabinet Monitoring
- **Smart City Supervisory System** – Connect Everything To Everything
- **SPaT Data** – Transmitted directly to iPhone/Droid



Not only are the devices provided by the Temple / Applied Information team suitable for independent solutions, they are part of a Glance Smart City Supervisory System that are being connected through an application (TravelSafely) that allows vehicles to connect with infrastructure, cyclists, EMS vehicles, signage, work zones, red light running, and other situations.

The innovations above lead to vehicles being able to be alerted when a school flasher is active and the vehicle enters the school zone. Since the TravelSafely application can work in the background of the phone, when Bluetooth is synched, the vehicle can be alerted through the vehicle's speakers and not only the phone speakers.

The TravelSafely App is available January 2018. Agencies that utilize a Smart City Supervisory System for their devices can use this app to gain all of the said features. To see this in action as it relates to school zones: <https://youtu.be/WXmqJrFXvuQ>

Chapter 2

Executive Summary of Proposal

This Request for Proposal for the School Flasher Control System in Beaufort County will involve the delivery of (34) time switches at (15) locations, a cloud-based software system for monitoring and managing the time switches, as well as assisting with the installation of the devices. Also involved in this RFP is the training of County personnel on each aspect of the system. Each of the above shall meet the RFP requirements specified.

The Delivery of the hardware and software will be per the County's desired schedule, however, a full shipment of (34) devices can be completed within (3) weeks after the Notice to Proceed. Each device will be delivered with an active license and will include the automatic configuration of its IP address. The Central System for the time switches require no maintenance by the County since the configuration and software maintenance can be performed remotely. This includes Over-The-Air software upgrades and security updates. The configuration (which includes programming of alerts, alarms and reports setup, user information and maps) will occur prior to delivery so that each unit will be setup and ready for schedules to be programmed and implemented.

Since the units must be able to have retrofit capabilities, a retrofit package will also accompany the devices as well as a set of detailed drawings for each device. High Gain antennas will be provided if we determine that poor cellular reception exists at certain locations.

Temple, Inc.'s installation assistance consists of (2) IMSA Level II certified technicians being onsite to retrofit the school zone time switches into the existing cabinets listed in the Flasher Locations presented in the RFP Documents. Temple will integrate the Time Switches into these Carmanah, RTC, and Tapco systems and will ensure that the systems operate correctly. During this time, we would ask that at least (1) Beaufort County employee will need to be present. The installation can be completed within (1) week after product is delivered. So the total timeline of this project will be (4) weeks after the notice to proceed is given.

The existing Carmanah R829C devices that are to be retrofitted with Applied Information Time Switches, currently have 10W solar engines running the devices. In this proposal, Temple will provide 20W solar panels and, in 4 locations, will provide new solar R829G series cabinets. The Applied Information time switch requires at least a 20W system in order to provide the cloud-based reporting features and functionality required in the RFP Requirements. Temple will assist with the install of the time switches but will need County personnel to offer providing a bucket truck in certain Carmanah locations.

Post-delivery/installation activities include *Temple Inc. and/or Applied Information* being available for Training. Temple will organize with the County and execute proper training for: Timer Setup, Timer Installation into a flasher cabinet, as well as Glance Software utilization and familiarization. The training strategy proposed for this project is included in this proposal.

Vendor Qualifications for this Proposal

Corporate Stability: As provided in the company overview, Temple has 63 years of industry experience in the southeastern United States. Our management team is a stable one and is committed to the market with a long-term approach. For over six decades, our business has focused on lasting relationships and providing customers post-delivery service for the products they purchase. Being a private company, our decision-making is based on meeting customers' needs and solving existing problems or issues they may have that relate to traffic.

Services and Technical Expertise: Beaufort County will not just be delivered product and left to themselves. Temple provides to the County the expertise to assist them with installing the hardware, programming the software, and adequately train the County until they are fully confident to use the system. It is our intention that the County rely on this system and use it to benefit their school flasher control system. Temple's presence will be focused on ensuring this project benefits the end-user.

Selection of Vendor Partnerships: Prior to selecting new partners, suppliers, or manufacturers, Temple ensures with the prospective firm that they meet our quality and integrity standards in order to put our reputation on the line. Applied Information meets these standards and have proven this to us since 2014 when collaboration began. Since then, AI and Temple together have deployed over (1500) flashing beacons to customers in the southeastern US with dozens of cloud-hosted systems online in (9) states.

Historical Performance of Projects: Temple has not, in the last (3) years had a contract terminated prior to project completion. Nor has Temple, Inc. been involved in lawsuits against the company within the last (5) years. There has been no litigation against Temple, Inc.

Confidentiality: Temple is willing to sign confidentiality agreements that may be required to pass criminal background checks of the project team.

Statement of Financial Stability: Temple, Inc. is a privately held family business and does not report financial statements. However, below is a statement of financial stability from our Certified Public Accountant, who has provided those services for us for over 20 years. See statement on following page.

ALFORD, MCKENZIE & BREEDEN, PC

Certified Public Accountants

101 JOHNSTON ST., S.E.
DECATUR, ALABAMA 35601

TELEPHONE 256/353-0713
FAX 256/353-0718

GEORGE RAY BREEDEN, III, CPA
ASA GENE MCKENZIE, CPA - RETIRED

MEMBER OF AMERICAN INSTITUTE
OF CERTIFIED PUBLIC ACCOUNTANTS

MEMBER OF ALABAMA SOCIETY
OF CERTIFIED PUBLIC ACCOUNTANTS

October 25, 2017

To Whom It May Concern:

We have provided accounting and income tax services for Temple, Inc. for over 20 years.

Temple, Inc. is currently in good financial condition. The company has maintained a good financial condition during the entire time we have provided services.

Sincerely,



Ray Breeden CPA

Assumptions for this Proposal

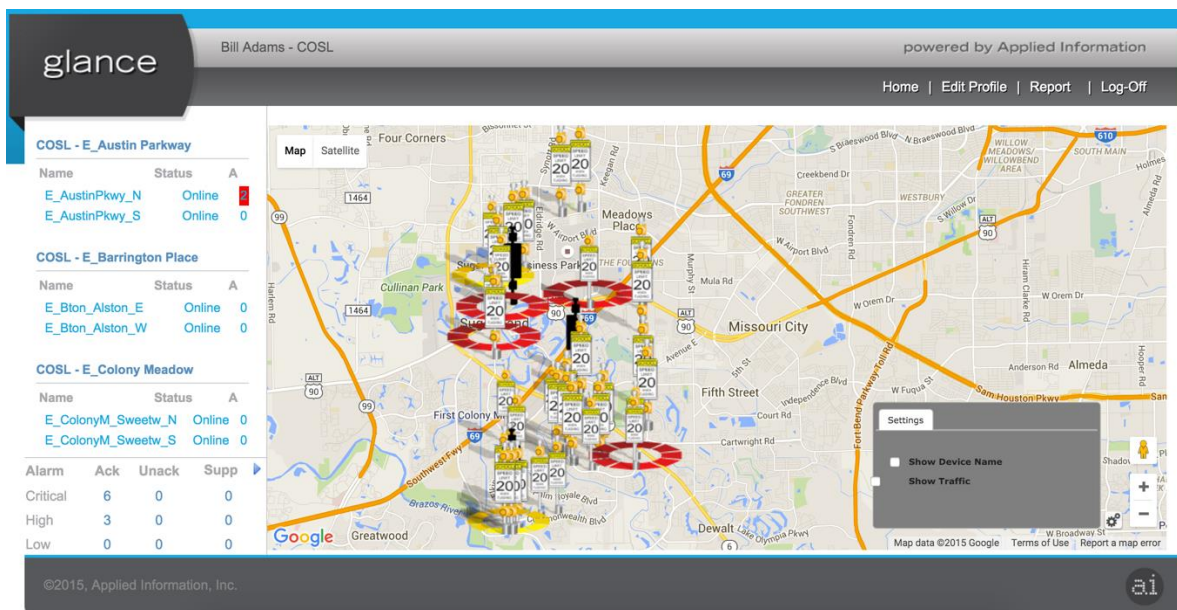
1. That the RFP is to “Provide School Flasher Control Systems, Licenses, and Technical Services” and as such, the installation of the Systems will be by Beaufort County with Technical Services and Assistance (as stipulated in Chapter 3) provided by Temple, Inc. As the County will be the installer, no use taxes are applicable to the offer nor are the costs associated with including a Payment and Performance Bond with this offer, as Temple, Inc. will be providing materials to the County for installation.
2. That the Business License will not be a requirement as Temple, Inc. will be shipping material via common carrier to the County and the County will be performing the installation of the material. Temple, Inc. will be present to provide Technical Services and Training for the County personnel as stipulated in Chapter 3.

Chapter 3

Product Information

Glance School Zone Flashing Beacon Monitoring and Control

The Glance School Zone Flashing Beacon system provides a simple to use interface to easily view and control school beacon flashers and their schedules from anywhere. The system can monitor if school beacons are operating correctly, by monitoring the power, possible failures of the lamps or batteries, and instantly alert the necessary resources. The school zone flashing beacons use a cloud and web based software system and each beacon has its own cellular modem to handle all communication. This allows County personnel to change the school schedules remotely from any computer to ensure the beacons are turning on at the correct times. The system also allows you to quickly adjust your beacon schedules for weather events and special days.



Glance showing map view of school beacons with some in alarm

Glance Innovative Features:



- Cloud and web based software
- No servers needed and no special software required, only a browser
- No maintenance costs. One-time license fee



- Devices self-locate themselves by utilizing built-in GPS & Cell Modem
- Always know where faults are as devices always reporting position
- Time Synch with GPS time for traffic controllers
- Automatic configuration of IP address (no static IP address needed)
- Synchronized with Glance server



- Intelligent Data Push – Low data plans



- Automated Alerts when cabinet faults are detected via Text and Email.
- AC failure, Battery failure, Flash, Red Monitor, and other alerts

- Control and Configure devices remotely utilizing built-in Cell modem
- Ability to know the problem before the technician leaves



- Key Performance Indicator (KPI) reports showcasing device uptime
- Automated weekly and monthly reports

Glance School Beacon Features:

The AI-500-071 school beacon timer switch can be retrofitted into almost any cabinet and the same unit supports both AC and DC systems. The timer switch has 2 relay outputs that are rated at 16amps. The installation of the timer switch is very simple and generally only requires the cable harness to be connected to the correct terminals. A simple puck GPS and Cellular antenna needs to be installed on the cabinet. The AI-500-071 is almost the same footprint of the RTC timer switches so it makes it easy to retrofit.

The AI-500-071 is designed and NEMA tested to withstand extreme temperatures ranging from -34C to +74C. The unit comes with a built-in battery backup system so even if the AC power fails or the battery totally fails the timer switch can still send status messages for the next 5 hours. This allows the system to alert operators even when the power has failed.



AI-500-071 School Zone Timer Switch

The AI-500-071 timer switch schedule can be programmed from the Glance central system via a simple web browser. Once the unit powers up and makes its connection to the Glance system it will download its schedules. Alternatively, the AI-500-071 timer switch has a local Ethernet port so that the schedule can be programmed *locally* over an internal web page.

glance Temple Inc - Temple powered by Applied Information

Playback | Home | Edit Profile | Report | Log-Off

City of Marietta - Marietta Beacons

Scheduling

☐ E_Westside_Maple_E
☐ E_Westside_Maple_W
☐ E_Westside_Polk_E
☐ E_Westside_Polk_W
☒ M_Marietta_Maple_E
☐ M_Marietta_Maple_W
☐ M_Marietta_Polk_E
☐ M_Marietta_Polk_W
☐ M_Marietta_Winn_C
☐ M_Marietta_Winn_N
☐ M_Marietta_Winn_S

City of Marietta - Not Installed

☐ MAR-Beacon Spare
 Gwinnett - Gwinnett 01 7-30 2-30

List Of Schedules

1	Marietta M School Schedule
2	Winn Street Schedule
3	Westside E School Schedule
4	Test Early Release
5	Schedule 5
6	Schedule 6
7	Schedule 7
8	Schedule 8
9	Schedule 9
10	Schedule 10
11	Schedule 11
12	Schedule 12
13	Schedule 13

Clear Selected Save Publish

1 - Marietta M School Schedule

M	D	Days	Time	Command
1	ALL	ALL	06:45:00	Beacon ON
2	ALL	ALL	07:30:00	Beacon OFF
3	ALL	ALL	14:00:00	Beacon ON
4	ALL	ALL	14:45:00	Beacon OFF
5	ALL	ALL	01:00:00	Beacon OFF
6	00:00:00	
7	00:00:00	
8	00:00:00	
9	00:00:00	
10	00:00:00	
11	00:00:00	
12	00:00:00	

Glance Showing scheduling for school zone beacons

Glance supports advanced scheduling, exception days, scenarios, remote override control, schedule delay for snow days and much more. All schedule information is stored locally on the timer switch. The timer switch schedule will always work independently of the Glance central system.

City of Sugarland - E_Austin Parkway

Holidays & Exceptions

☐ E_AustinPkwy_N
☐ E_AustinPkwy_S

City of Sugarland - E_Barrington Place

☐ E_Bton_Alston_E
☐ E_Bton_Alston_W

City of Sugarland - E_Colony Meadow

☐ E_ColonyM_Sweetw_N
☐ E_ColonyM_Sweetw_S

City of Sugarland - E_Commonwealth

☐ E_Commonwealth_E
☐ E_Commonwealth_W

City of Sugarland - E_Dullus

☒ E_Dulles_N
☐ E_Dulles_S

E_Dulles_N

Name	Start (12:00 AM)	End (11:59 PM)	Command
1 Holiday	September 07, 2015	September 07, 2015	Beacon OFF
2 Holiday	September 25, 2015	September 25, 2015	Beacon OFF
3 Holiday	October 12, 2015	October 12, 2015	Beacon OFF
4 Thanksgiving	November 23, 2015	November 27, 2015	Beacon OFF
5 Christmas	December 21, 2015	January 04, 2016	Beacon OFF
6 Holiday	January 18, 2016	January 18, 2016	Beacon OFF
7 Holiday	February 15, 2016	February 15, 2016	Beacon OFF
8 Spring break	March 14, 2016	March 18, 2016	Beacon OFF
9 Holiday	March 25, 2016	March 25, 2016	Beacon OFF
10 Holiday	April 15, 2016	April 15, 2016	Beacon OFF
11 Holiday	May 30, 2016	May 30, 2016	Beacon OFF
12 Summer Break	June 03, 2016	August 23, 2016	Beacon OFF

Add Remove

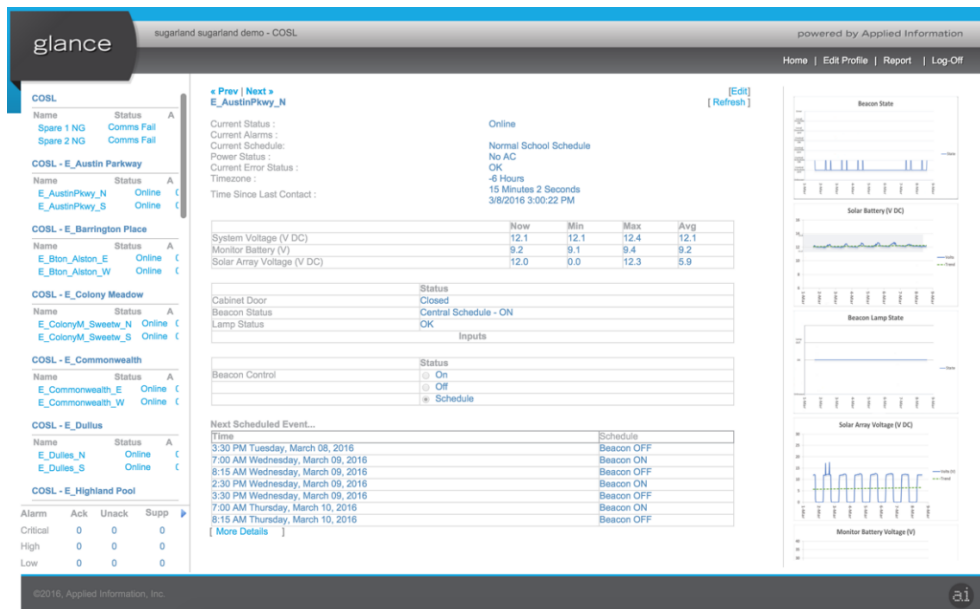
Glance advanced scheduling showing holidays and exception days

Scenarios can be used to control multiple devices at the same time. This feature allows you to set up a group of beacons to be turned on/off with one click of the button. This feature can be used in emergency situations.

The screenshot shows the 'glance' web interface for Temple Inc - Temple. The top navigation bar includes links for Playback, Home, Edit Profile, Report, and Log-Off. The main content area is titled 'City of Marietta - Marietta Beacons' and features three tabs: Scenario, Scheduling, and Holidays. The 'Scenario' tab is active, displaying a list of scenarios on the left and a detailed view of '23 - School Beacons ON' on the right. The scenarios list includes 'School Beacons ON', 'School Beacons OFF', and 'School Beacons SCHEDULE'. The detailed view shows a table with columns for Device, Media, and a checkbox for each beacon. The table lists 23 beacons, all with 'Beacon ON' status. At the bottom, there are buttons for 'Clear Selected', 'Save', and 'Activate Scenario'.

Glance Scenarios for turning on multiple beacons in one click

The system monitors all aspects of the school zone flashing beacon to ensure all beacons are operating correctly. The timer switch is capable of monitoring; AC voltage, DC voltage, solar voltage, lamp failures, beacon status, door switch, monitor battery. The unit measures the current in the lamps and is capable of determining if 1 lamp has failed or both lamps have failed. The detailed status page also allows operators to individually turn the beacons on/off or back to schedule by simply clicking the check box under beacon control.



Glance showcasing detailed information on school beacons including beacon status, solar voltage, beacon lamp status and solar array voltage.

The AI-500-071 timer switch has an integrated cell modem and GPS. This allows the device to self-locate itself on the Glance map and to self-configure itself. The timer switch utilizes intelligent data push so that it only sends information when new information is available or if a set period of time has occurred. This allows for real time communication of faults and status updates. Sending the information directly from the device also allows us to operate without the need of static IP address and makes managing the devices very simple. All communications utilize XML data structures over either HTTP or HTTPS to ensure secure communications. The internal cell modem is 3G but can be designed to be upgraded to 4G in the future.

The system has advanced reporting capabilities to display graph comparisons between different devices as well as beacon status reports. The graph comparisons make it easy to see if one device looks out of place from the other devices. See below screenshot that showcases this ability for solar batteries. The top left graph shows a battery that is not charging correctly due to a failing solar panel.



Glance graph comparison page for solar batteries

The beacon status report takes into account the last couple of days of data from the beacons and provides the health status of the beacons. The report will show good / fair / fail for the AC voltage, Battery voltage, Solar Panels, Beacon Status and communication reliability. This is a great tool that provides an overview of how all the counties beacons are operating.

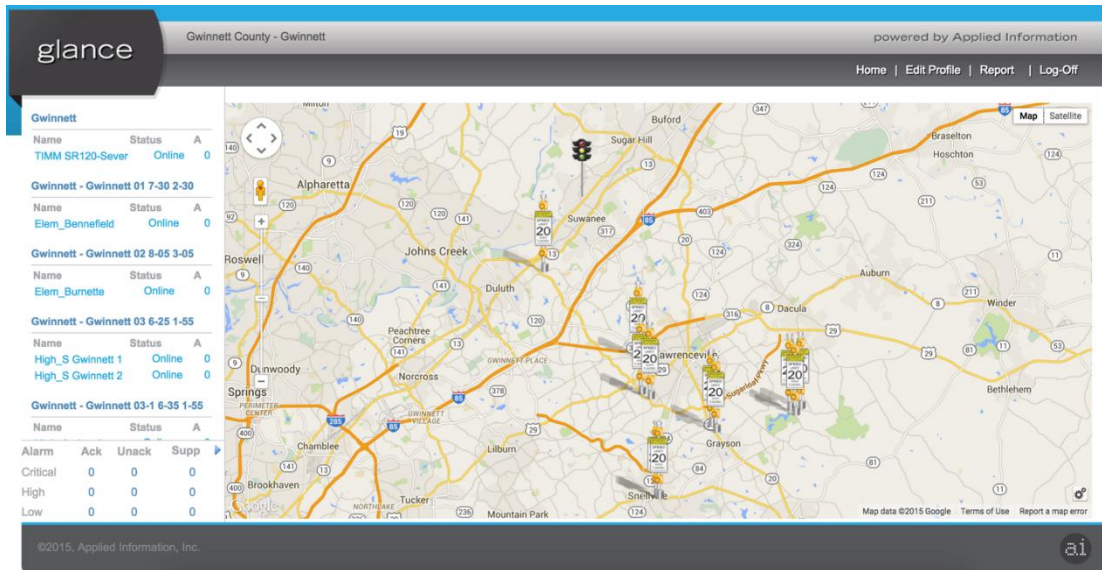
Beacon Health Report for COSL															
8 March, 2016 06:13 AM															
BUSINESS	DEVICE	SYSTEM VOLTAGE (AVG)			SOLAR ARRAY VOLT (AVG)			AC VOLTAGE			MONITOR BATTERY			LAMP	COMM % RELIABLE
		MIN	MAX	STATE	MIN	MAX	STATE	MIN	MAX	STATE	MIN	MAX	STATE		
Paradigm: COSL															
OFFLINE	Spare 1 NG (1503)														0%
OFFLINE	Spare 2 NG (1504)														0%
COSL: E Austin Parkway															
ONLINE	E_AustinPkwy_N (1226)	12.09	12.62	GOOD	0	12.58	FAIR				9.13	9.46		OK	100%
ONLINE	E_AustinPkwy_S (1227)	12.34	13.7	GOOD	0	18.8	GOOD				6.67	6.76		OK	100%
COSL: E Barrington Place															
ONLINE	E_Bton_Alston_E (1266)	12.48	14.17	GOOD	0.01	20.5	GOOD				12.34	12.76		OK	100%
ONLINE	E_Bton_Alston_W (1267)	12.5	14.06	GOOD	0.01	20.37	GOOD				6.69	6.81		OK	100%
COSL: E Colony Meadow															
ONLINE	E_ColonyM_Sweetw_N (1239)	12.49	13.86	GOOD	0.01	18.61	GOOD				7.49	9.23		OK	100%
ONLINE	E_ColonyM_Sweetw_S (1238)	12.57	13.66	GOOD	0	16.48	GOOD				6.64	6.74		OK	100%
COSL: E Commonwealth															
ONLINE	E_Commonwealth_E (1240)	12.42	13.9	GOOD	0	19.38	GOOD				6.61	6.73		OK	100%
ONLINE	E_Commonwealth_W (1241)	12.44	13.87	GOOD	0.1	20.49	GOOD				6.62	6.73		OK	100%
COSL: E Dullus															
ONLINE	E_Dulles_N (1230)	12.41	13.66	GOOD	0	16.34	GOOD				6.65	6.74		OK	100%
ONLINE	E_Dulles_S (1231)	12.43	14	GOOD	0.18	16.63	GOOD				6.65	6.74		OK	100%
COSL: E Highland Pool															
ONLINE	E_Highld_Williams_N (1262)	12.5	13.96	GOOD	0	19.64	GOOD				6.64	6.76			100%
ONLINE	E_Highld_Williams_S (1263)	12.21	13.76	FAIR	0	19.94	GOOD				12.1	12.21			100%
COSL: E Highlands															
ONLINE	E_Highlds_Willms_N (1224)							119.5	123.7	GOOD	13	13.2		OK	100%
ONLINE	E_Highlds_Willms_S (1225)	12.45	14.07	GOOD	0	17.53	GOOD				6.69	6.82		OK	100%
COSL: E Lexington Creek															

The system can be purchased with the cellular services with initial procurement in 1 year increments with options for 5 years or even 10 years of data to be purchased.

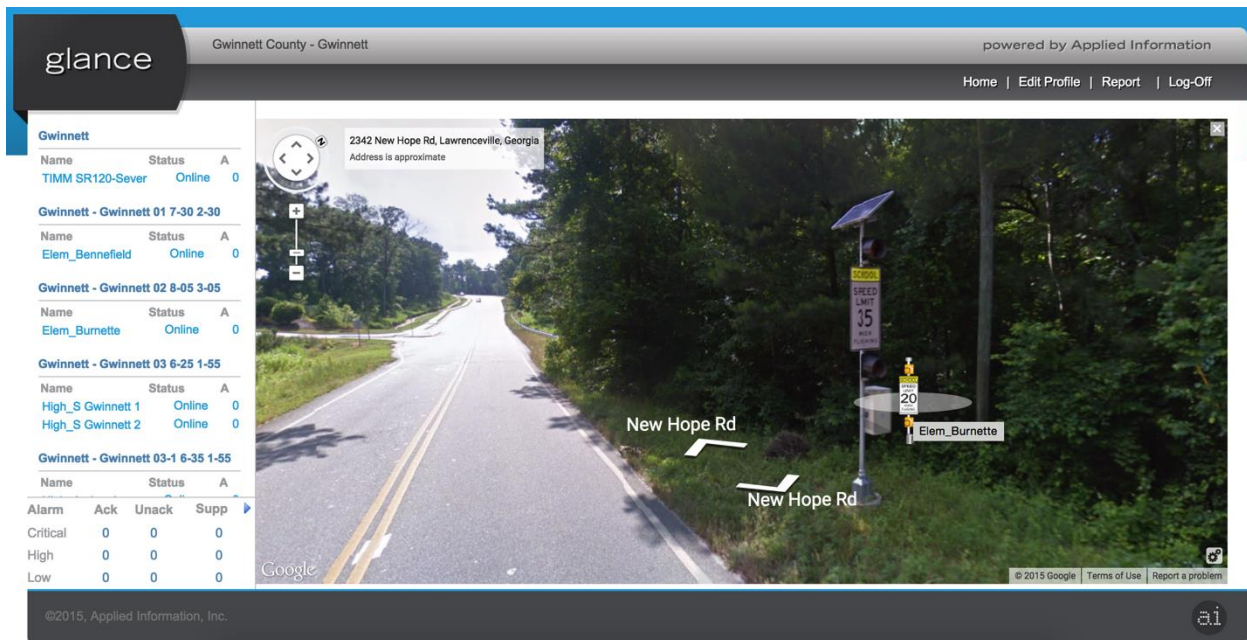
Glance School Zone Flashing Beacon Pilot Project in Gwinnett County

Gwinnett previously installed (11) AI-500-071 School Beacon Timer Switches into existing school beacon cabinet assemblies in the spring of 2015. These timer switches replaced the older timer switches and provided a way of determining the status and health of all the school beacon flasher units over cellular communications.

Below is a screenshot of Glance with the Gwinnett devices shown on a map view.



Glance Google Street view showing one of the School Beacons (Elem_Burnette) installed with a Glance School Zone system.



Detailed Device Information and Scheduling

Below is a screenshot showing the information from one of the Gwinnett beacons.



This detailed view provided information on the Beacon state, AC voltage, Battery Voltage, next scheduled event, and current schedule. The view also showed trending graphs so that an operator could spot any errors that might have occurred over the last week of operation.

RFP Requirements / Exception

Temple ensures that it meets or exceeds the requirements set forth in the RFP documents for this project with only (1) Exception (See Assumptions regarding Payment and Performance Bonds).



Turning data into information...

www.appinfoinc.com

AI-500-070 School Beacon Timer Switch and Cellular Modem

Overview

The AI-500-070 series provides a cost-effective, easy to integrate means of adding monitoring and control to School Beacons Flashers. It is designed for extreme temperature applications and has low power requirements, making it suitable for solar powered applications. The simple Integrated School Beacon Timer Switch and Cellular Modem can be retrofitted into existing School Beacon cabinets to upgrade the school beacons to the latest technology.

The unit provides an easy way to monitor the school beacons status and health such as AC power, battery backup, monitor beacon current, cabinet door open, local override control and radar speed information.

The unit works in conjunction with the Glance Platform, providing an cloud-based School Beacon solution. Simply connect the unit to your school beacons to add monitoring and control to your equipment. The unit allows you to remotely configure schedules for the school beacons from the Glance cloud based software.

Features

- ✓ Low cost Internet connectivity solution
- ✓ Low power consumption
- ✓ Compatible with Glance platform
- ✓ GPS enabled for self-locating
- ✓ Monitor beacon lamps current to determine when a beacon has failed
- ✓ Remotely change schedule to multiple devices
- ✓ Remotely monitor radar speed of vehicles
- ✓ Email & text messages when faults are detected
- ✓ Integral battery back-up for power fail reporting
- ✓ Local manual override switch
- ✓ Remote firmware updates available



Call us today to get started at [678.830.2170](tel:678.830.2170) or email us at sales@appinfoinc.com

4411 Suwanee Dam Road, Suite 510, Suwanee, GA 30024 • 678.830.2170
appinfoinc.com • sales@appinfoinc.com



Temple, Inc. PO Box 2066 Decatur, AL 35602 800.633.3221 www.temple-inc.com

Hardware Specification



AI-500-070

Connectivity

Cell Modem	Yes
Ethernet Port (10/100Base-T)	Yes
RS-232 Port	Yes

Industrial I/O

Analog Inputs	AC Power, Solar Batteries & Temperature
Digital Inputs	Beacon Status & Door Open Switch
Digital Outputs	2 X Beacon Circuits

Miscellaneous

Operating Systems	µC/OS-II
GPS	Yes
Operating Temperature	-37°C to 74°C
Humidity	5-95% non-condensing
Dimensions	8" x 5" x 2"
Input Voltage	10-30v DC, 120V AC
Power Consumption DC	idle - 149mA avg; active - 212mA avg
Power Consumption AC	idle - 17mA avg; active - 24mA avg
Battery Backed Memory	Yes

Also suitable for...

Solar/battery powered	Yes
Lamp Monitoring	Yes
Scheduling	Yes

** Custom configurations available
for volume orders



4411 Suwanee Dam Road, Suite 510, Suwanee, GA 30024 • 878.830.2170
apinfoinc.com • sales@apinfoinc.com

Applied Information Inc.
5 Year Limited Warranty
(With purchase of (5) year Connectivity / Support Package)

Applied Information Inc. ("AI") provides the following limited 5-year warranty ("Warranty") coverage as applicable to your purchased AI branded product ("Product"). The following constitutes the terms and conditions of that limited warranty.

1. What the AI Warranty Covers and for How Long

Subject to the exclusions and claim procedure set out below, AI warrants for a period of 5 years from the date of sale by AI or its authorized distributor (the Purchase Date), that the AI Product is free of material or workmanship defects and provides coverage as detailed below.

To exercise this right through any of the time periods above, the customer shall ship, at its own expense, the Product to AI according to the return instructions detailed below, and AI will, repair or replace the Product and return it to the customer free of charge, or offer credit towards the purchase of new Product.

AI shall be entitled, at its discretion, to use new and/or reconditioned parts in performing warranty repair or providing a replacement Product. AI also reserves the right to use parts or Product of original or improved design in any repair or replacement. All replaced Product and/or any parts removed from repaired Products become the property of AI.

If AI chooses to repair or replace a Product, the above warranty will continue to apply and remain in effect for the balance of the warranty period calculated from the Purchase Date (and not the repair or replacement date).

If AI chooses to offer a credit towards the purchase of new Product, then the warranty in effect and applicable to the new Product shall apply to the new Product. All credits must be used within 90 days of issuance from AI towards the purchase of new Product or become null and void.

2. What the AI Warranty Does Not Cover

AI's Warranty does not provide coverage for the following which are expressly excluded from the above warranty:

- Failure due to normal wear and tear of the Product.
- Failure caused by improper user programming of product settings through computer software supplied with or associated with an AI Product.
- Failure due to fire, water, neglect, improper installation, generalized corrosion, biological infestations, or input voltages that create operating conditions beyond the maximum or minimum listed in the AI specifications including lightning strikes.
- Products which have been repaired or altered other than by AI or authorized by AI.
- Products that have their original identification (trademark, serial number) markings defaced altered or removed.
- Products utilized as a component part of a product expressly warranted by another manufacturer.
- Operation or storage of the Product outside the specification ranges, and/or alteration or deployment of AI Products other than in accordance with any published or provided user, storage or maintenance requirements.
- Failure that is in any way attributable to the improper use, storage, maintenance, installation or placement of the AI Product.

- Failure caused by abuse, misuse, abnormal use, or use in violation of any applicable standard, code or instructions for use in installations, including, but not limited to, those contained in the National Electrical Code, the Standards for Safety of Underwriters Laboratory, Inc., Standards for the International Electro technical Commission, Standards for the American National Standards Institute, or the Canadian Standards Association.
- Failure due to acts of God.
- Any additional costs required to repair or replace the defective product including legislatively-imposed fees where applicable.

3. Restrictions and Limitations to AI's Warranty

- AI is not responsible for providing access to the failed Product, or liable for any costs including but not limited to retrieval and redeployment of Product, and disassembly and re-assembly of other product that is not AI's.
- This Warranty is not transferable and only applies to the first end-user purchaser of the product directly from AI or a certified AI distributor.
- AI does not warrant the results obtained from the implementation of recommendations made by AI or its authorized distributors concerning the use, design or application of AI Products
- The end-user who purchases the Product assumes all responsibility and liability for loss or damage resulting from the handling or use of AI Products.
- The onus is on the Purchaser to provide evidence that any event that may invalidate the warranty has not occurred, including specific storage, maintenance or operational procedures to assure Product performance,
- AI has the sole discretion in determining the validity of any warranty claim, and reserves the right to determine the cause for Product failure including examining patterns in Product usage, trends in Product failure, and to review the customer's documentation of installation, use, maintenance, storage procedures and test results.
- AI's liability on any claim, whether in warranty, contract, negligence, or any other legal theory, for loss, damage or injury arising directly or indirectly from or in relation to the use of the AI Product shall in no event exceed the purchase price of the AI Product which gave rise to the claim. IN NO EVENT SHALL AI BE LIABLE FOR PUNITIVE, SPECIAL, INCIDENTAL OR CONSEQUENTIAL DAMAGES WHETHER FORSEEABLE OR NOT INCLUDING BUT NOT LIMITED TO LOSS OF PROFITS OR REVENUES, LOSS OF USE OF GOODS, OR LOSS OF BARGAIN.
- The Warranty set out above is the sole warranty granted by AI with respect to the Product. No oral understanding, representations or warranties shall be of any effect and AI makes no further warranties, express or implied concerning the AI Products other than the Warranty set out above. The Buyer, where permitted by applicable law, hereby expressly waives any statutory or implied warranty that the AI Product shall be merchantable or fit for a particular purpose.
- All disputes ("Disputes") arising out of or in connection with this Agreement shall be referred first to the parties for amicable resolution. In the event that the Dispute is not resolved within 30 days of written notice from one party to the other, the Dispute shall be referred to mediation. All Disputes incapable of being resolved through mediation shall be referred to and finally resolved by arbitration under the Uniform Arbitration Act (Georgia), with each party bearing its own expenses incurred in respect of any such arbitration.

How to Make a Valid Warranty Claim

Temple must be notified in writing of any Warranty claim within 90 days after first evidence of non-compliance or the Warranty will be void. Written notification shall include date of non-compliance, location and use of Product, serial numbers, where and through whom the Product was purchased, and proof of purchase.

Temple is not responsible for providing access to the failed Product, including but not limited to retrieval and redeployment of Product, and disassembly and re-assembly of other product that is not Temple's.

Step 1: Prepare your documentation to speak to a Customer Service Representative. Please be prepared to provide the Product serial or identification numbers, proof of purchase from Temple as well details on the location and nature of failure. Obtain an RMA number (Return Materials Authorization number) from Temple Customer Service prior to returning any Products. Temple reserves the right to refuse any items sent to Temple without an associated RMA number. To obtain an RMA number, please contact carol.harris@temple-inc.com or call 256.353.3820

Step 2: After receiving an RMA number, please ship the product back to Temple as instructed. If possible, utilize the original shipping containers that came with your Product. If not, please utilize a shipping method that will as much as possible replicate your original packaging material. Temple will not assume responsibility for items that are damaged during shipping. With the RMA number which is provided you will also receive shipping direction and labeling instructions, please read and follow carefully. As a reminder, you are responsible for shipping the product back to Temple and the associated costs, failure to provide this may result in non-acceptance of shipment by Temple.

Step 3: Temple will review the Product and its method of failure to determine whether warranty coverage is applicable, and if so will provide for the repair, replacement or credit as applicable in the coverage of the Warranty outlined above.

Please note that Temple strives to resolve warranty issues as quickly as possible, but pending the nature and difficulty of assessing the failure, the process time may range to properly close. Please contact your Customer Service Representative if you are unsure as to the status of your warranty claim.

Where specific maintenance or storage procedures were required to assure Product performance, please be prepared to demonstrate that proper storage and maintenance procedures were followed. Please also note that Temple reserves the right to determine the cause for Product failure including examining patterns in Product usage, trends in Product failure, and to review the customer's documentation of installation, use, maintenance, storage procedures and test results. Assisting Temple as required in this process will help to ensure the true root cause for failure is determined to prevent future failures. If the customer fails or declines to provide adequate information to Temple, to enable Temple to assess whether the Product has failed or the cause of the Product failure, Temple reserves the right to decline to honor the warranty.

Step 4: If Temple determines that the Warranty is applicable, then: Once your returning Product has been received and qualified for warranty coverage, you will receive either the repaired or replaced Product, or credit towards the purchase of new Product in accordance with the applicable warranty and elections. Please note that if Temple is returning Product to you in accordance with this Warranty, that Temple will facilitate returns to the destination from the original sales order.

Chapter 3 (Continued)

Proposed Project Plan for Beaufort County's School System

A brief synopsis of the schedule of events is captured below. With a delivery deadline between (60) and (90) calendar days (August school opening), the ability to pre-configure these devices ahead of time will be key to a successful deployment.

Milestone # 1 (Assuming that Notice to Proceed occurs around the week of November 6, 2017)

- **November 6, 2017** (or date of NTP) – Temple to negotiate the below milestones with the County prior to implementation
- **November 13, 2017** (or 1 week after NTP) – The total list of locations provided by Beaufort County will be used to complete the remote configuration of the alerts and alarms into the Glance Central Software (Database design, naming nomenclature and system preferences). Temple will need a configuration form completed by the County which tells us who the County desires to be alerted and who will be the system “users”
- **November 20, 2017** (or 2 weeks after NTP) – Temple, Inc. procures devices, Applied Information pre-configures the units to be provided
- **December 4, 2017** (or 4 weeks after NTP) - Delivery of all (34) 500-071 time switches, harnesses, and retrofit brackets to the County kitted and ready for implementation at appropriate locations

Milestone # 2

- **December 4, 2017** – Temple, Inc. arrives onsite and assists the county with loading their school schedules into Glance
- **December 5, 2017** - Temple to assist County with removal of existing School Flashers and installing the new AI 500-071 devices using retrofit kit
- **December 7, 2017** – Installation to be completed and System to be operational (likely to be completed sooner)

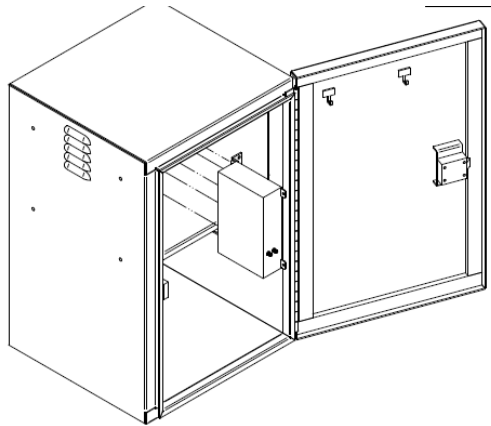
Milestone # 3

- **December 11** (or at County's discretion) – Glance Central System Training (per the Training Strategy) to commence at a time that best suits the County and the Glance operators that will be present during the training.

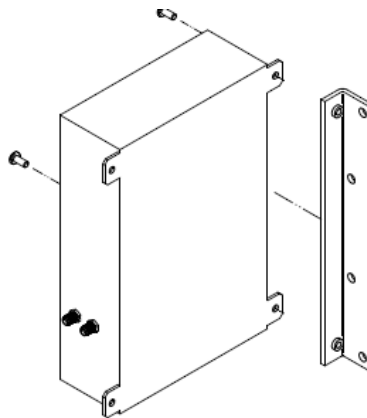
General Installation Strategy

The Applied Information time clock system installation consists only of the removal of the current clocks in the (34) locations in Beaufort and the integration of the AI 500-071 time switch / retrofit harness / bracket onto the existing back panel in the field. Certain cases may call for a High Gain Antenna kit, which is only used when/if cellular reception is considered to be low or inadequate. The antennas will be mounted on an existing pole above the existing flasher cabinet.

The below images show the orientation in which the time switches will be mounted. An “L” bracket will accompany the time switch to eliminate the need to move existing equipment around in the cabinet, making installation very efficient. It also allows an extremely quick installation.



[Flasher cabinet sample with AI 500-071 device installed]



[Sample retrofit bracket attaching to AI 500-071 device allowing for a side-mount installation]

Beaufort County System - Maintenance and Support Strategy

Temple, Inc., in conjunction with Applied Information, Inc., will provide maintenance and support to Beaufort County for the school flasher beacon system, as follows:

1) *First line support*

First line support will consist of contacting Temple, Inc. via the toll-free number 1-800-633-3221 and requesting support. Temple will then direct the call as appropriate. The system is self-supervising, and will notify the County, Temple and Applied Information in the event of a fault.

2) *Field device support and maintenance*

In regards to onsite service/support, Temple, Inc. will be available to be scheduled for a visit. Remote support by Temple and/or Applied Information is available via phone support at any time. In regards to Repair / Return Support, the 500-071 Flasher unit is the field module that will be exchanged in the unlikely event of a fault. Once the unit has been exchanged in the field, then Temple will be notified and the name/grouping on Glance will be changed to reflect the swap. The defective unit that has been swapped out will be marked for repair, and shipped back to Temple under an RMA number that has been obtained from Temple. The customer will be alerted of an estimated return date at the time of issuing an RMA.

3) *Central system support and maintenance*

Central system support and maintenance is provided by Temple in conjunction with Applied Information. As the system is cloud hosted, all server and database maintenance is carried out by the Temple/Applied Information team. This includes the regular database maintenance tasks. The County will only need a browser on any of the County's computers (or mobile devices) to access the system. User names and initial password will be created for the County's users during the system configuration phase. Any security updates or software/firmware updates will be done remotely after Temple / Applied Information notifies the County that an update is needed.

4) *Installation*

All installation work in the County's cabinets will be carried out with at least (1) Beaufort County technician along with the assistance of (2) Temple technicians. The upgrades to the existing Carmanah Solar Systems/Panels will/may require Beaufort County personnel to provide a bucket truck. This will not affect the estimated installation timeline of 1 week onsite.

5) *Warranty*

The warranty of these devices are extended to 5 years, when the Connectivity & Support Package is purchased, this package is being offered in this proposal as a 5-year fixed price.

Proposed Training Strategy for Beaufort County

Training for Install/Setup/Test: Proper training, which focuses on the installation and testing of a time switch in a school zone flasher cabinet will commence on-site during the first installation, or at a time that is best suited for the County. The trainees will likely be the signal technicians and infrastructure support personnel, however, the training will be open to all Beaufort County personnel, in order to better understand how the devices are installed and tested. Trainee Limit: 20 people, manuals provided, 1 day course

Method – Onsite with (2) Temple Technicians/Trainers

- Trainees will witness the removal of a legacy timer switch, the installation of the new timer switch and retrofit harness and wiring, and the activation of that device onto the Central Software System
- Our Technicians, via laptop, will instruct how to locally program a timer switch and will instruct on how to program a timer switch via the cloud (Glance)
- Once activated and Glance shows the current status of the device, the following tests will be implemented by Temple Technicians:
 - Location – ensuring that Glance shows the unit at the installed location
 - Power Fail Alarm – triggered by removing AC or DC
 - Schedule Set – ensuring that customer's specific schedule is running
 - Flashing Operation – indicating that Flash Operation occurs at scheduled time
 - Beacon Fail Alarm – notification appears in Glance when a failed beacon is simulated
 - Solar Batteries (if applicable) – ensure battery status is monitored correctly by Glance
 - Other minor tests and settings, as applicable

Training for Glance Software: Proper training, which focuses and is geared towards Glance Software, will commence at a place the County designates and scheduled any time after device configuration and installation is complete. The trainees for this course will be, at minimum, the administrators and users that will be logging into the Glance Software. Trainee Limit: 20 people, manuals provided, 1-2 day course (4 hours each day)

Method – Both Remote and at TCC

- Glance Training will involve at least (1) Temple representative and at least (1) Applied Information representative
- Trainers will begin with logging in those who, based on configuration, are allowed to use the Central System and run through a certified Glance Software Training Program, which properly teaches familiarity with:
 - Glance Maps, Displays, Icons, Street Views
 - Alarms and meanings of each alarm/alert and layout on Glance

- Regional Grouping based on Beaufort Co preferences
- Individual Detail Displays, Parameters, Graphs
- Overrides (Individual and Specific Scenario)
- Scheduling: Custom, Holidays, Events, DST, Conflicts
- Logs and Diagnostics
- Going over all Reports and how to get the most out of them.
- Remote Training is available at any time throughout the deployment. This will involve everything that the Glance Training involves, but can be performed via webinar
- A survey will be provided post-training to see if any trainees need more focused attention

Chapter 4

Experience, Qualifications, and Project References

Temple, Inc. has delivered, deployed, and serviced thousands of Timer Switches throughout nine states in the southeastern United States to either public agencies directly or through projects which have involved third party contractors. For over twenty five (25) years, Temple has been involved with vendor partners who, together, have helped agencies optimize school zone systems. Beginning in 2014, Temple began collaborating with a technology company called Applied Information. With Temple's significant experience in school zone deployments and Applied Information's commitment to the ITS industry, the two company's make a solid team for this proposal. Included below are brief descriptions of some of the personnel on the Project Team:

Bryan Mulligan

President/Applied Information, Inc.

Qualifications: B Sc. Eng (Civil) –First Class Honors –University of Cape Town – 1979

Bryan is the President and Founder of Applied Information, which he established in 2011 to meet the need for a technology company that can apply the new wireless, Internet-of Things, cloud computing and connected vehicle technologies into modern solutions for the transportation sector. Applied information has established technologies in multiple sectors in transportation, including intersection management, connected vehicle priority/preemption systems, pedestrian safety, mobile data acquisition, parking and ITS management.

Bryan continues to provide leadership in the US and international transportation industries through his continue chair, and leadership, of the NEMA 3TS Transportation Section. NEMA (the National Electrical Manufacturers Association) is the leading US trade association in the transportation sector, and is one of the co-owners of the NTCIP suite of standards. Bryan is also a member of the NTCIP Joint Committee, and the NEMA Head of Delegation.

Byron Hood

Sales Representative, Carolinas

Qualifications: BS Business Administration, Athens State University
23+ Years' Experience in Transportation Industry

Byron provides sales and project management services for the full line of traffic, safety, and ITS products and services offered by Temple and their many manufacturing partners. Byron has worked closely with State and Municipal DOTs across the States of South Carolina



Temple, Inc. PO Box 2066 Decatur, AL 35602 800.633.3221 www.temple-inc.com

and North Carolina since 1997. Prior to his current position, which located him in Fort Mill, SC, he held the position of Mississippi and Louisiana sales representative. He currently supports Applied Information, as well as a full line of traffic signal, ITS, and safety equipment from conceptual ideas through system implementation, while assisting with ongoing systems support/service. He has over 23 years of regional sales management experience that cover a broad technical range of ITS technologies, products, and traffic control sub-systems. Availability: 100%

David Barrett, Jr.

Georgia Technical Support

Qualifications: IMSA Level II Field Technician, over 10 years of experience

David Barrett, Jr. is a member of our South Carolina / Georgia Technical Team over in Gainesville, Georgia. He has received an IMSA Level 2 certification and is also a certified technician for all of the products that Temple represents. David Jr has obtained vast knowledge of proper troubleshooting in the field and is considered an expert on topics ranging from detection methods, priority control/preemption, pedestrian and school safety devices, battery backup and uninterruptible power systems. Junior also has proficient knowledge involving all of the products that Temple represents. Temple, Inc. takes to heart the saying "Service what you sell." Traveling out of the Gainesville office allows for rapid response in the event of any problems that might arise during the installation and/or maintenance. David, Jr. also has extensive experience with South Carolina both at the DOT level as well as experience with supporting Beaufort County.

Availability: 100%

David Owen

Georgia Technical Support

Qualifications: IMSA Level II Certified Technician, 5+ years of experience

David Owen is a member of our South Carolina / Georgia Technical Team over in Gainesville, Georgia. He focuses on ITS applications including Applied Information's full product line. With 5 years of experience, David has shown the capability to not only succeed in his service roles with traditional traffic devices but also has become very knowledgeable with Central Software Systems and Integration to Traffic Management Centers and Traffic Adaptive Implementation. He is also a certified technician for all of the products that Temple represents. Traveling out of the Gainesville office allows for rapid response in the event of any problems that might arise during the project. David is also a certified trainer for many of the products that Temple represents and has completed

programs such as “Train the Trainer” for devices ranging from Detection to Glance Software Implementation and Support. Availability: 100%

David Whitcomb

ITS Specialist and Maintenance Support (Computer Systems)

Qualifications: BS Computer Science, Mississippi State University, 2003

David Whitcomb holds a degree in Computer Science, and his experience in the ITS environment focuses on the design and deployment of digital video distribution systems, video graphics, Ethernet and IP network layout/management, as well as integral software development. David is highly knowledgeable about centralized traffic control systems and adaptive control systems. He will be available for remote technical support throughout the life of the contract. David has supported and trained numerous agencies and consultants regarding technical solutions such as: Glance Central Software Systems, TACTICS Central Software Systems, SEPAC functionality and features, IP Camera Systems, Ethernet Switch Configuration, and other devices that require set-up and configuration. David manages numerous maintenance contracts within the southeastern United States and is available via phone to assist with troubleshooting techniques and is a significant contributor to Temple’s service team. Having an employee like David Whitcomb to be available to speak with technicians, supervisors, IT and ITS managers is part of Temple’s long-standing commitment to the Temple Technical Team (T3). Availability: 100%

Experience With and References For School Zone Deployments

- I. **Project Name:** Marietta Smart City
Location: Marietta, Georgia

Project Description: Beginning in June 2014, the City of Marietta began implementing a “Smart City” approach to its school zone beacon assemblies due to some limitations that their previous system had been experiencing city-wide. The initial project included retrofitting (5) 500-071 Timer Switches into existing assemblies along the Polk St NW corridor for West Side Elementary School and Marietta Middle School. Along with the retrofitting of the devices, the Glance Central System was activated and configured per the City’s preferences. The project implementation took less than 30 days after procurement and since then, the City has expanded significantly. Start Date: July 2014 End Date August 2014. To date, Marietta has (11) school zone systems on Glance and over (100) devices using the many Glance Central Software features for intersection monitoring, Preemption, Driver Feedback monitoring and other capabilities. Marietta has invested in this technology and has become one of the leaders in the US in regards to Smart City deployments.



Temple, Inc. PO Box 2066 Decatur, AL 35602 800.633.3221 www.temple-inc.com

Contact Person: Tim Cox, City of Marietta
 Address: 725 N Marietta Pkwy, Marietta GA, 30060
 Phone: 770.595.9238
 Email: TCox@mariettaga.gov

II. Project Name: Gwinnett County Flasher Upgrade
Location: Gwinnett County, Georgia

Project Description: During the summer months of 2016, Gwinnett County, Georgia upgraded (270) School Zone Time Switches into existing Flasher Cabinets that previously utilized Eltec and RTC time clocks. The notice to proceed took place in May, 2016 with a project completion deadline of August 1, 2016. During the installation phase, the County (with Temple's assistance) was able to install all (270) devices in just (5) business days. Prior to the retrofit upgrade taking place, the County would receive many phone calls and complaints about school zone flasher scheduling and operability. After the deployment, the County realized a 93% decrease in citizen complaints and calls. Gwinnett County was extremely impressed with the ease of deploying these devices as well as the many features of the Glance Software capability.

Contact Person: Tom Sever, Gwinnett County
 Address: 75 Langley Dr, Lawrenceville, GA, 30046
 Phone: 770.822.7872
 Email: tom.sever@gwinnettcountry.com

III. Project/Location: Brevard County School Beacon Upgrade
Location: Brevard County, Florida

Project Description: Brevard County recently upgraded their school zone flashing beacons with (50) 500-071 time clocks and is currently running the system seamlessly. The County performed the installation with the assistance of Temple, Inc.'s certified technicians. Temple also performed onsite training and Glance Central System training to ensure that the County fully understood the alarms, reports, alerts and all of the other features that come along with a Glance System. Installation of these devices took less than a week and the County was on-line within a few days.

Contact Person: Brandon Collins, Brevard County
 Address: 2725 Judge Fran Jamieson Way,
 Bldg. C, 3rd Floor, Suite C-303
 Viera, FL 32940
 Phone: 321.455.1440
 Email: Brandon.collins@brevardcounty.us



Chapter 4 (Continued)

Typical Design Considerations

Item	Design Consideration	Temple/AI Response
1	Provide the expected average and maximum bandwidth requirements of the system per client endpoint administering the system.	The Glance School beacon devices use approximately 10MB of data per month. These data plans are managed by Applied Information and any overages are covered by Temple/AI on the data plans offered.
2	How does the system make it easy to see at a glance which school beacons are in a fault condition?	The Glance system displays school beacon faults in a list view as well as color coded rings on the map view.
3	How does the system let the user/operator know that a school beacon has gone into fault?	The system sends text and email alerts that are sent out to responders based on the specific faults detected.
4	How can an operator change the schedule in the school beacon?	The system has a web-based user interface that allows the operators to send new schedules to the school beacon.
5	How does the system handle holidays and exception days?	The system has holidays and exceptions separated into a different tab from schedules. This makes it easy to change the holidays only or the schedules only. The operator selects the date range and can then choose to turn the beacons off/on or a special exception day schedule to run.
6	How can a user turn on/off multiple beacons in case of an emergency?	The Glance system has the ability to implement scenarios that do bulk operations. Scenarios allows users to preconfigure groups of beacons to turn on/off or back to schedule.
7	How does the system monitor AC voltage, battery voltage and solar charge status?	The glance beacons constantly sample the voltage from the incoming AC power or the batteries and solar charge devices. This information is then displayed in both text and graphical form. The system graphs data for a period of one week so that trends can be seen. Information is also shown for now and high, low and average information for the last 24 hours.
8	How does the system determine if the one or both beacon lamps have	The Glance 071 timer switch monitors the current to the lamps. The system is able to

	failed? Can it also support lamp out detection on single beacon systems?	determine if only one lamp has failed or both lamps have failed. Yes, this feature is supported on both dual lamp and single lamp systems.
9	How does the system show the overall availability/reliability of the School Beacon on a weekly basis?	The Glance system generates Beacon Status Report at the start of each day and the end of the week. These showcase the operational availability of school beacons. The report details the beacons health condition of the battery's, solar chargers and lamps.
10	Can the system be cloud hosted so the City does not need any IT infrastructure?	The Glance system is a cloud based solution that allows operators to access the system through any web browser. Optionally it can be installed on the city servers.
11	Does the system require any special software to be installed to view faults and system status?	The Glance system can be accessed through any web browser.
12	How can an operator ensure the beacons in the field are running the correct schedules?	The Glance system has the ability to determine if there is a "schedule mismatch". This means the schedule that is stored in Glance is different to the schedule in the devices. A small brown icon is displayed next to the devices with a schedule mismatch and users can see what caused this. Once an operator downloads the correct schedule these mismatches will clear.
13	How does the system display the urgency of the school beacon faults?	The Glance system provides color coded rings on the map view and list view. Large red rings show a critical alarm and smaller yellow and amber. The urgent faults are always highlighted in red
14	How does the system communicate?	The school beacon timer switch utilizes cellular communication to send all data back to the central system. The beacon uses "intelligent data push" to send back information when anything changes in the field. This provides real time monitoring of the beacons, and low data usage.
15	How does the system make it easy to configure the system?	All the Glance field devices incorporate a GPS, so that the field device will automatically locate itself in the right position on the map. Also, the

		devices can use dynamic IP addresses so that the maintaining agency does not need to maintain IP addresses. Fixed IP addresses can be used if the agency prefers.
16	How does the city purchase the data contracts?	The data contract can be purchased in 1-year, 5-year year or 10-year data plans with the devices. Alternatively the City can also purchase the data contract in yearly periods.
17	Does the system require any recurring yearly fees?	No, the Glance license is a perpetual license and does not require any annual or monthly costs.
18	On solar powered systems, with the system still provide the operators with and alarm/alert if the system battery is stolen?	Yes. The field devices are provided with their own internal battery that will still communicate to Glance, and raise alarms/alerts, if the system battery is stolen.
19	Can the County use its own cell provider?	Yes. The County can use its own cellular, however, the Connectivity & Support Service Package proposed by Temple extends the warranty up to 5 years.
20	Are the clocks for AC and DC systems identical and interchangeable, and are the relays rated at 16 amps as required by NEC?	Yes, the clocks for AC and DC are identical and interchangeable. Yes, the relays are rated at 16A so that a standard 15A circuit breaker can be used, per the NEC.
21	What is the local presence for technology and installation support for the County?	The local presence and installation assistance as well as maintenance will be performed by Temple, Inc. Temple, Inc. will come alongside the County to assist them in the installation of the devices.

Chapter 5

Sample Purchase Contracts

No "Sample Contract" was provided in the RFP Document, however, Temple, Inc. agrees to uphold the CONTRACTUAL REQUIREMENTS (with one exception) found on page 19-25 of the RFP Document, which is included below, as well as agrees to uphold the insurance requirements listed in the RFP.

The (1) Exception that Temple, Inc. takes to these contractual requirements is in regards to 9.0 PAYMENT AND PERFORMANCE BOND (attached Assumptions in Chapter 2 addressing this concern):

CONTRACTUAL REQUIREMENTS

- 1.0 **EXCUSABLE DELAY:** The Contractor shall not be liable for any excess costs, if the failure to perform the contract arises out of causes beyond the control and without the fault or negligence of the Contractor. Such causes may include, but are not restricted to, acts of God or of the public enemy, acts of the Government in either its sovereign or contractual capacity, fires, floods, epidemics, quarantine restrictions, strikes, freight embargoes, and unusually severe weather; but in every case the failure to perform must be beyond the control and without the fault or negligence of the Contractor. If the failure to perform is caused by the default of a subcontractor, and if such default arises out of causes beyond the control of both the Contractor and the subcontractor, and without the fault or negligence of either of them, the Contractor shall not be liable for any excess costs for failure to perform, unless the supplies or services to be furnished by the subcontractor were obtainable from other sources in sufficient time to permit the Contractor to meet the required delivery schedule.
- 2.0 **S.C. LAW CLAUSE:** Upon award of a contract under this proposal, the person, partnership, association, or corporation to whom the award is made must comply with local and State laws which require such person or entity to be authorized and/or licensed to do business in Beaufort County. Notwithstanding the fact that applicable statutes may exempt or exclude the successful offeror from requirements that it be authorized and/or licensed to do business in Beaufort County, by submission of this signed proposal the offeror agrees to subject itself to the jurisdiction and process of the Fourteenth Judicial Circuit Court of Beaufort County, as to all matters and disputes arising or to arise under the contract and the performance thereof including any questions as to the liability for taxes, licenses, or fees levied by State or local government.
- 3.0 **OFFEROR'S QUALIFICATIONS:** Offeror must, upon request of the County, furnish satisfactory evidence of their ability to furnish products or services in accordance with the terms and conditions of this proposal. The Purchasing Department reserves the right to make the final determination as to the offeror's ability to provide the services requested herein, before entering into any contract.
- 4.0 **OFFEROR RESPONSIBILITY:** Each offeror shall fully acquaint himself with conditions relating to the scope and restrictions attending the execution of the work under

Temple, Inc. PO Box 2066 Decatur, AL 35602 800.633.3221 www.temple-inc.com

the conditions of this proposal. It is expected that this will sometimes require on-site observation. The failure or omission of an offeror to acquaint himself with existing conditions shall in no way relieve him of any obligation with respect to this proposal or to the contract.

- 5.0 **AFFIRMATIVE ACTION:** The Contractor will take affirmative action in complying with all Federal and State requirements concerning fair employment and employment of the handicapped and concerning the treatment of all employees, without regard or discrimination by reason of race, religion, sex, national origin, or physical handicap.
- 6.0 **PRIME CONTRACTOR RESPONSIBILITIES:** The Contractor will be required to assume sole responsibility for the complete effort, as required by this RFP. The County will consider the Contractor to be the sole point of contact with regard to contractual matters.
- 7.0 **SUBCONTRACTING:** If any part of the work covered by this RFP is to be subcontracted, the Contractor shall identify the subcontracting organization and the contractual arrangements made with same. All subcontractors must be approved, in writing by the County, or when applicable a political subdivision within the County with the County's concurrence. The successful offeror will also furnish the corporate or company name and the names of the officers of any subcontractors engaged by the vendor. The County reserves the right to reject any or all subcontractors and require substitution of a firm qualified to participate in the work as specified herein.
- 8.0 **OWNERSHIP OF MATERIAL:** Ownership of all data, material, and documentation originated and prepared for the County pursuant to this contract shall belong exclusively to the County.
- 9.0 **PAYMENT AND PERFORMANCE BOND:** The successful Contractor shall furnish, within ten (10) days after written notice of acceptance of proposal, a Payment and Performance Bond. Contractor shall provide and pay the cost of a Payment and Performance Bond. The Bond shall be in the amount of one-hundred percent (100%) the annual contract cost, issued by a Surety Company licensed in South Carolina with an "A" minimum rating of performance as stated in the most current publication of "Best's Key Rating Guide, Property Liability" which shall show a financial strength rating of at least five (5) times the Contract Price. The Bond shall be accompanied by a "Power of Attorney" authorizing the attorney-in-fact to bind the surety and certified to include the date of the bond.
- 10.0 **NONRESIDENT TAXPAYERS:** If the offeror is a South Carolina nonresident taxpayer and the contract amount is \$10,000.00 or more, the offeror acknowledges and understands that in the event he is awarded a contract offeror shall submit a Nonresident Taxpayer Registration Affidavit (State form #1-312-6/94), before a contract can be signed. Affidavit must certify that the nonresident taxpayer is registered with the S.C. Department of Revenue or the S.C. Secretary of State's Office, in accordance with Section 12-9-310(A)(2)(3) of S.C. Code of Laws (1976) as amended.
- 11.0 **BUSINESS LICENSE:** In accordance with the *Beaufort County Business License Ordinance, 99-36, Article III*, as enacted November 22, 1999, any business or

individual generating income in the unincorporated area of Beaufort County is required to pay an annual license fee and obtain a business license. The ordinance referenced is available on the Beaufort County website at www.bcgov.net or by calling the Business License Administrator at (843) 255-2270 for a list of schedules.

- 12.0 **ADDITIONAL ELIGIBILITY:** Other Beaufort County Public Procurement units shall, at their option, be eligible for use of any contracts awarded pursuant to this Invitation.
- 13.0 **INSURANCE REQUIREMENTS:** Prior to commencing work hereunder, Contractor, at his expense, shall furnish insurance certificate showing the certificate holder as Beaufort County, P.O. Drawer 1228, Beaufort, SC 29901-1228, Attention: Purchasing Director and with a special notation naming Beaufort County as an Additional Insured on the liability coverages. If not otherwise specified, the minimum coverage shall be as follows:
- 13.1 Worker's Compensation Insurance - Contractor shall have and maintain, during the life of this contract, Worker's Compensation Insurance for his employees connected to the work/delivery, in accordance with the Statutes of the State of South Carolina and any applicable laws.
- 13.2 Commercial General Liability Insurance - Contractor shall have and maintain, during the life of this contract, Commercial General Liability Insurance. Said Commercial General Liability Policy shall contain Contractual Liability and Products/Completed Operations Liability subject to the following minimum limits: BODILY INJURY of at least \$1,000,000 PER PERSON, \$1,000,000 PER OCCURRENCE; PROPERTY DAMAGE of at least \$1,000,000 PER OCCURRENCE; or BODILY INJURY/PROPERTY DAMAGE of at least \$2,000,000 COMBINED SINGLE LIMIT.
- 13.3 Comprehensive Automobile Liability Insurance - The Contractor shall have and maintain, during the life of this contract, Comprehensive Automobile Liability, including non-owned and hired vehicle, of at least \$1,000,000 PER PERSON, \$1,000,000 PER OCCURRENCE; PROPERTY DAMAGE of at least \$1,000,000 PER OCCURRENCE, or BODILY INJURY/PROPERTY DAMAGE of at least \$2,000,000 COMBINED SINGLE LIMIT.
- 13.4 The required insurance policy at the time of issue must be written by a company licensed to do business in the State of South Carolina and be acceptable to the County.
- 13.5 The Contractor/vendor shall not cause any insurance to be canceled or permit any insurance to lapse. All insurance policies shall contain a clause to the effect that the policy shall not be canceled or reduced, restricted or limited until fifteen (15) days after the County has received written notice, as evidenced by return receipt of registered or certified letter. Certificates of Insurance shall contain transcript from the proper office of the insurer, the location, and the operations to which the insurance applies, the expiration date, and the above-mentioned notice of cancellation clause.

- 13.6 The information described above sets forth minimum amounts and coverages and is not to be construed in any way as a limitation on the Contractor's liability.
- 14.0 **INDEMNITY:** The Contractor hereby agrees to indemnify and save harmless the County, its officers, agents, and employees from and against any and all liability, claims, demands, damages, fines, fees, expenses, penalties, suits, proceedings, actions and cost of actions, including attorney's fees for trial and on appeal of any kind and nature arising or growing out of or in any way connected with the performance of the Agreement, whether by act of omissions of the Contractor, its agents, servants, employees or others, or because of or due to the mere existence of the Agreement between the parties.
- 15.0 **TERMINATION FOR DEFAULT:**
- 15.1 The performance of Work under the Agreement may be terminated by the Purchasing Director, in accordance with this clause, in whole or in part, in writing, whenever the Director of Purchasing shall determine that the Contractor has failed to meet the performance requirements of this Agreement.
- 15.2 The Purchasing Director has the right to terminate for default, if the Contractor fails to make delivery of the supplies or perform the Work, or if the Contractor fails to perform the Work within the time specified in the Agreement, or if the Contractor fails to perform any other provisions of the Agreement.
- 16.0 **TERMINATION FOR CONVENIENCE:** The County may without cause terminate this contract in whole or in part at any time for its convenience. In such instance, an adjustment shall be made to the Contractor, for the reasonable costs of the work performed through the date of termination. Termination costs do not include lost profits, consequential damages, delay damages, unabsorbed or under absorbed overhead of the Contractor or its subcontractors, and/or failure to include termination for convenience clause into its subcontracts and material purchase orders shall not expose the County to liability for lost profits in conjunction with a termination for convenience settlement or equitable adjustment. Contractor expressly waives any claims for lost profit or consequential damages, delay damages, or indirect costs which may arise from the County's election to terminate this contract in whole or in part for its convenience.

SPECIAL INSTRUCTIONS

- 1.0 **INTENT TO PERFORM:** It is the intent and purpose of Beaufort County that this request permits competition. It shall be the offeror's responsibility to advise the Purchasing Department if any language, requirements, etc., or any combinations thereof inadvertently restricts or limits the requirements stated in this RFP to a single source. Such notification must be submitted in writing and must be received by the Purchasing Department

not later than ten (10) days prior to the proposal closing date. A review of such notifications will be made.

2.0 RECEIPT OF PROPOSAL: Proposals, amendments thereto, or withdrawal requests received after the time advertised for proposal closing will be void, regardless of when they were mailed.

3.0 PREPARATION OF PROPOSAL

3.1 All proposals should be complete and carefully worded and must convey all of the information requested by the County. If significant errors are found in the offeror's proposal, or if the proposal fails to conform to the essential requirements of the RFP, the County and the County alone will be the judge as to whether that variance is significant enough to reject the proposal.

3.2 Proposals should be prepared simply and economically, providing a straightforward, concise description of offeror's capabilities to satisfy the requirements of the RFP. Emphasis should be on completeness and clarity of content.

3.3 Each copy of the proposal should be bound in a single volume where practical. All documentation submitted with the proposal should be bound in that single volume.

3.4 If your proposal includes any comment over and above the specific information requested in our Request for Proposal (RFP), you are to include this information as a separate appendix to your proposal.

4.0 AMENDMENTS: If it becomes necessary to revise any part of the RFP, an amendment will be provided to all offerors who received the original Request for Proposal. The County shall not be legally bound by an amendment or interpretation that is not in writing.

5.0 ADDITIONAL INFORMATION: Offerors requiring additional information may submit their questions, in writing to the Purchasing Department. Answers to questions received that should change and/or clarify this solicitation will be provided in writing to all offerors via an amendment.

6.0 ORAL PRESENTATION/DISCUSSIONS: Any offeror or all offerors may be requested to make an oral presentation of their proposal to the County, after the proposal opening. Discussions may be conducted with responsible offerors, who submit proposals determined to be reasonably susceptible of being selected for award for the purpose of clarification to assure full understanding of and responsiveness to the solicitation requirement.

Offerors shall be accorded fair and equal treatment with respect to any opportunity for discussions and revision of proposals, and such revisions may be permitted after

submissions and prior to award, for the purpose of obtaining best and final offers. The purpose of these presentations/discussions will be to:

- 6.1 Determine in greater detail such offeror's qualifications.
 - 6.2 Explore with the offeror the scope and nature of the project, the offeror's proposed method of performance, and the relative utility of alternative methods of approach.
 - 6.3 Determine that the offeror will make available the necessary personnel and facilities to perform within the required time.
 - 6.4 Agree upon fair and reasonable compensation, taking into account the estimated value of the required services/equipment, the scope and complexity of proposed project, and nature of such services/equipment.
- 7.0 **FUNDING**: The offeror shall agree that funds expended for the purposes of the contact must be appropriated by the County Council for each fiscal year included within the contract period. Therefore, the contract shall automatically terminate without penalty or termination costs if such funds are not appropriated. In the event that funds are not appropriated for the contract, the offeror shall not prohibit or otherwise limit the County's right to pursue and contract for alternate solutions and remedies, as deemed necessary by the County for the conduct of its affairs. The requirements stated in this paragraph shall apply to any amendment or the execution of any option to extend the contract.
- 8.0 **AWARD**: An award resulting from this request shall be awarded to the responsive and responsible offeror whose proposal is determined to be most advantageous to the County, taking into consideration price and the evaluation factors set forth herein; however, the right is reserved to reject any and all proposals received, and in all cases the County will be the sole judge as to whether an offeror's proposal has or has not satisfactorily met the requirements of this RFP.
- 9.0 **PUBLIC ACCESS TO PROCUREMENT INFORMATION**: No such documents or other documents relating to this procurement will be presented or made otherwise available to any other person, agency, or organization until after award. Commercial or financial information obtained in response to this RFP, which is privileged and confidential, will not be disclosed. Such privileged and confidential information includes information which, if disclosed, might cause harm to the competitive position of the offeror supplying the information. All offerors, therefore, must visibly mark as "Confidential" each part of their proposal, which they consider to contain proprietary information.
- 10.0 **DEVIATIONS**: Any deviations from the requirements of this RFP must be listed separately and identified as such in the table of contents.
- 11.0 **ALTERNATES**: Innovative alternative proposals are encouraged, provided however, that they are clearly identified as such and all deviations from the primary proposal are listed.

- 12.0 GRATUITIES: It shall be unethical for any person to offer, or give, or agree to give any County employee or former County employee; or for any County employee or former County employee to solicit, demand, accept, or agree to accept from another person a gratuity or an offer of employment in connection with any decision, approval, disapproval, recommendation, or preparation of any part of a program requirement or a purchase request, influencing the content of any specification or procurement standard, rendering of advice, investigation, auditing, or in any other advisory capacity in any proceeding or application, request for ruling, determination, claim or controversy, or other particular matter pertaining to any program requirement, or a contract or subcontract, or to any solicitation or proposal therefore.
- 13.0 KICKBACKS: It shall be unethical for any payment, gratuity, or offer of employment to be made by or on behalf of a subcontractor under a contract to the prime contractor or higher tier subcontractor, or any person associated therewith, as an inducement for the award of a subcontractor order.
- 14.0 PROTEST PROCEDURES
- 14.1 Right to Protest: Any actual or prospective proposer, offeror, or contractor who is aggrieved, in connection with the solicitation or award of a contract, may protest to the Purchasing Director. The protest shall be submitted in writing fourteen (14) days after such aggrieved person knows or should have known of the facts giving rise thereto. The protest must be accompanied by a detailed statement, indicating the reasons for such protest.
- 14.2 Authority to Resolve Protest: The Purchasing Director shall have authority, prior to the commencement of an action in court concerning the controversy, to settle and resolve a protest of an aggrieved proposer, offeror, or contractor; actual or prospective, concerning the solicitation or award of a contract.
- 14.2 Decision: If the protest is not resolved by mutual agreement, the Purchasing Director shall issue a decision, in writing within ten (10) days. The decision shall,
- 14.2.1 State the reasons for the action taken; and
- 14.2.2 Inform the protestant of its right to administrative review as provided in this Section.
- 14.4 Notice of Decision: A decision under Subsection (3) of this Section shall be mailed or otherwise furnished immediately to the protestant and any other party intervening.
- 14.5 Finality of Decision: A decision under Subsection (3) of this Section shall be final and conclusive, unless fraudulent, or
- 14.5.1 Any person adversely affected by the decision appeals administratively, within ten (10) days after receipt of decision under Subsection (3) to the County Council in accordance with this Section.

14.5.2 Any protest taken to the County Council or court shall be subject to the protestant paying all administrative costs, attorney fees, and court costs when it is determined that the protest is without standing.

15.0 CERTIFICATION REGARDING DEBARMENT, SUSPENSION, INELIGIBILITY, AND

VOLUNTARY EXCLUSION: The contractor certifies, by submission of this document or acceptance of a contract, that neither it nor its principals is presently debarred, suspended, proposed for debarment, declared ineligible, or voluntarily excluded from participation in this transaction by any State, Federal department or agency. It further agrees by submitting this qualification statement that it will include this clause without modification in all lower tier transactions, solicitations, proposals, contracts, and subcontracts. Where the bidder/contractor or any lower tier participant is unable to certify this statement, it shall attach an explanation to this solicitation/bid.

State whether or not your company has been involved in any litigation within the past five (5) years arising out of your performance by circling YES or NO.

Non-Collusion

As required in the RFP Documents, below is Temple's certification.

Proposer declares that the proposal is not made in connection with any other proposer submitting a proposal for the same commodity or commodities, and that the proposal is bona fide and is in all respects fair and without collusion or fraud. Each proposer, if included in proposal documents, shall execute an affidavit of non-collusion. Collusion and fraud in proposal preparation shall be reported to the State of South Carolina Attorney General and the United States Justice Department.

Certification of Non-Collusion in Proposal Preparation

(Signature)

(Date)

In compliance with the attached specifications, the undersigned offers and agrees, if this proposal is accepted by the Beaufort County Council, within one hundred and twenty (120) days of the date of proposal opening, to furnish any or all of the items upon which prices are proposed within the time specified in the cost/fee schedule.

Legal Business Name

Temple, Inc.

(If your company is an LLC, you must identify all principals to include addresses and phone numbers in your submittal)

Federal Tax ID

63-0575758

Address

305 Bank St Decatur, AL 35601

Does your company currently have a location within Beaufort County? Yes ☒ No ☐

Representative Signature

Forrest Temple

Print Authorized Representative's Name

Forrest Temple

Telephone Number 800.633.3221

Fax Number 256.353.4578

Email Address forrest.temple@temple-inc.com





**COUNTY COUNCIL OF BEAUFORT COUNTY
PURCHASING DEPARTMENT**

106 Industrial Village Road, Bldg. 2, Post Office Drawer 1228
Beaufort, South Carolina 29901-1228

David L Thomas, Purchasing Director
dthomas@bcgov.net 843.255.2353

TO: Councilman Stu Rodman, Chairman, Public Facilities Committee

FROM: David L Thomas, CPPO, Purchasing Director

SUBJ: New Contract as a Result of Solicitation

Recommendation for Contract Award for IFB 092217, Voters Registration Warehouse

DATE: 12/07/2017

BACKGROUND:

Beaufort County issued an Invitation for Bid (IFB) to solicit proposals from qualified firms to provide construction services for the addition of a 2,319 SF warehouse for the County's Voters Registration Department's use. A non-mandatory pre-bid meeting was held on August 24, 2017, at 3:00 pm in the Finance Conference Room and six (6) construction firms attended the meeting. Two bids were received and opened on September 22, 2017. The County received bids from the firms listed below.

County staff evaluated the bids, along with our architect R. W Chambers, and determined that Patterson Construction was the lowest responsive and responsible bidder.

The site location is 15 John Galt Road, Beaufort Industrial Village, Beaufort, SC.

VENDOR INFORMATION:

1. Patterson Construction, Beaufort, SC

COST:

\$210,834*

2. Paul S. Atkins Company, Statesboro, GA

\$259,025

FUNDING:

*Staff is requesting a 10% Contingencies of \$21,083.34 to cover any unforeseen conditions. The grand total for the project including the 10% contingency is \$231,917.34.

2017 General Obligation Bond, account# 40100011-54420, Renovation Existing Building Voter Registration, Balance \$250,000.

Funding approved: By: Date:

FOR ACTION: Public Facilities Committee on December 11, 2017.

RECOMMENDATION:

The Purchasing Department recommends that the Public Facilities Committee approve and recommend to County Council the contract award to Patterson Construction in the amount of \$210,834 and include a 10% contingency of \$21,083.34 for a total contract cost of \$231,917.34 for the new Voter Registration Warehouse from the funding sources listed above.

Attachment:



cc: Joshua Gruber, Interim County Administrator

Approved: Date:

Check to override approval: ☐ Overridden by:

Override Date:

Alicia Holland, Assistant County Administrator, Finance

Approved: Date:

Robert McFee, PE, Division Director, Construction, Engineeri

Approved: Date:

Check to override approval: ☐ Overridden by:

Override Date: ready for admin: ☒

Mark Roseneau, Director, Facility Management Department

Approved: Date:

Check to override approval: ☐ Overridden by:

Override Date: ready for admin: ☒

After Initial Submission, Use the Save and Close Buttons

PRELIMINARY BID TABULATION

PURCHASING DEPARTMENT



Project Name:	Voter's Registration Warehouse
Project Number:	IFB 092217
Project Budget:	
Bid Opening Date:	9/22/2017
Time:	3:00
Location:	Finance Conference Room
Bid Administrator:	Marlene Myers
Bid Recorder:	Marlene Myers

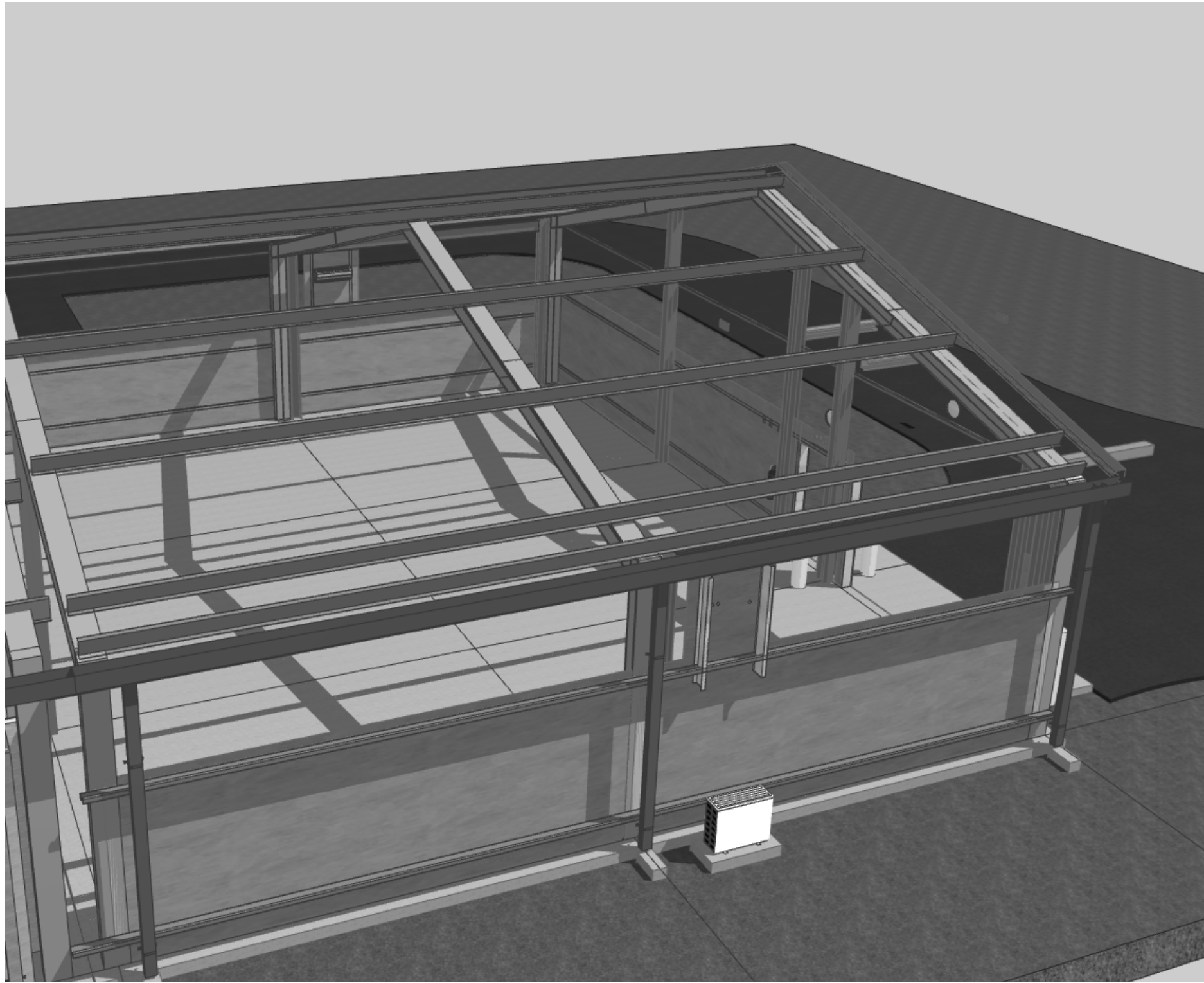
The following bids were received for the above referenced project:

BIDDER	BID FORM	BID BOND	ALL ADDENDA	SCH OF VALUES	SUB LISTING	SMBE DOCS	Grand Total Price
Paul S. Atkins Company, Inc.		X					\$579,575
Patterson Construction, Inc.		X					\$410,208
Beaufort County posts PRELIMINARY bid tabulation information within 2 business days of the advertised bid opening. Information on the PRELIMINARY bid tabulation is posted as it was read during the bid opening. Beaufort County makes no guarantees as to the accuracy of any information on the PRELIMINARY tabulation. The bid results indicated here do not necessarily represent the final compliance review by Beaufort County and are subject to change. After the review, the final award will be made by Beaufort County Council and a certified bid tab will be posted online.							

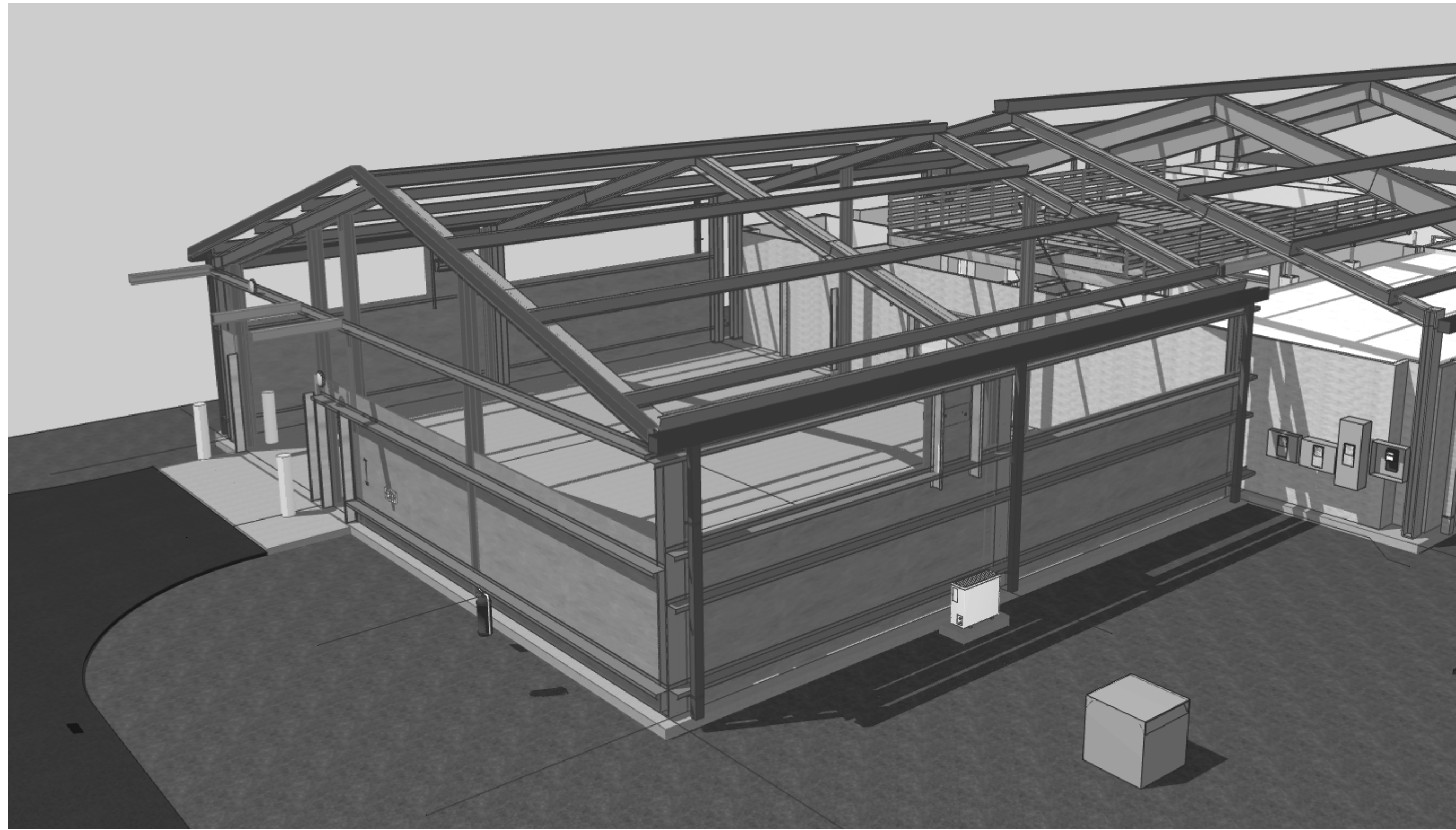
Bid Administrator Signature

Bid Recorder

12/7/2017



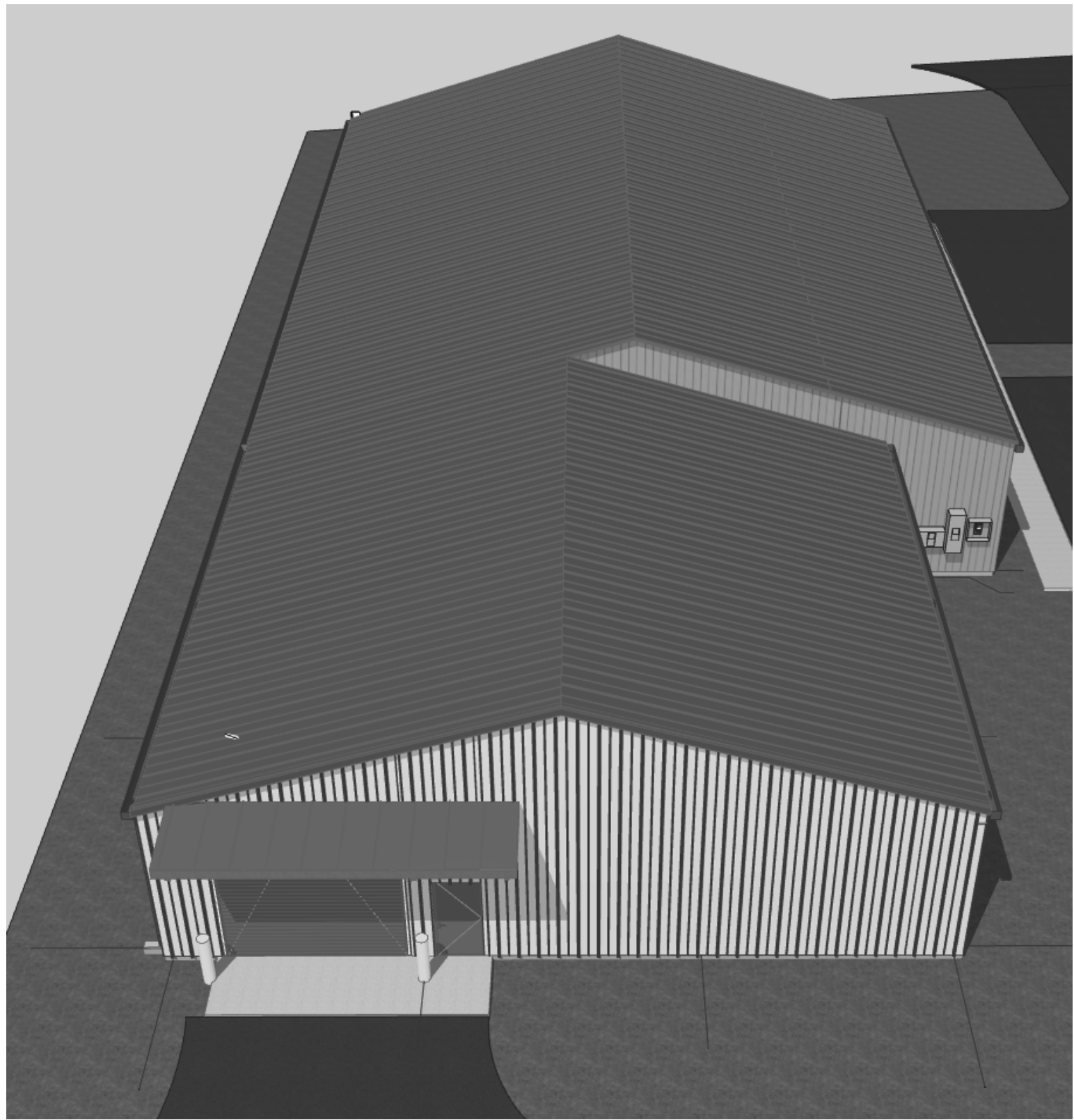
1 VIEW FROM SOUTH
SCALE: 1:1.62



2 VIEW FROM NORTH EAST
SCALE: 1:1.41



3 VIEW FROM EAST
SCALE: 1:1.60



4 VIEW OF ROOF
SCALE: 1:1.59

BASE BID

	Project No. 20170880-00	Checked	Drawn RWC	Project Title Beaufort County Voter Registration 15A John Galt Road Beaufort S.C.	Date 7/24/17
	for bidding only			Drawing Title SKETCHES	DRAWING NO. A-901
	R.W.CHAMBERS, ARCHITECT PO BOX 1181 BEAUFORT, S.C. 843-379-1000				



COUNTY COUNCIL OF BEAUFORT COUNTY

Beaufort County Engineering Department

2266 Boundary Street

Beaufort, South Carolina 29902

Voice (843) 255-2700 Fax (843) 255-9420



TO: Councilman Steward Rodman, Chairman, Public Facilities Committee

VIA: Josh Gruber, Interim County Administrator *JG*
Tom Keaveny, County Attorney *TK*

FROM: Robert McFee, Division Director for Construction, Engineering & Facilities *J.R. McFee*

SUBJ: **Request for Road Acceptance--- Stillwell Road, Bluffton**

DATE: November 29, 2017

BACKGROUND. Stillwell Road, $\pm 4,183$ LF, is a dirt road located off May River Road in Bluffton, County Council District 9 (Attachment #1). Stillwell Road has an established 60' right of way that leads to Midway Farms Subdivision. For the past 30 years, homeowners in the Midway Farms Homeowners Association have been solely responsible for the maintenance and repair of Stillwell Road. Midway Farms Homeowners Association has amended their covenant agreement to petition the County to include Stillwell Road into the County Road System. Property owners abutting Stillwell Road have signed a petition (Attachment 2) for the County to accept the road into the County Road System.

Midway Farms Subdivision consists of only fifteen property owners while Stillwell Road services twenty-seven additional property owners. The public utilizes the road for activities such as religious retreats and Heroes on Horseback. Midway Farms Homeowners Association will continue to maintain the roads within Midway Farms Subdivision.

Beaufort County Public Works has provided in Attachment 3 the estimated costs for maintenance. It was noted that currently there are no roadside drainage ditches. The initial estimate for establishing roadside drainage and servicing the Stillwell Road 4 times a year is \$34,601. After this initial work, the estimated annual maintenance cost is \$13,687.

FOR ACTION. Public Facilities Committee Meeting on December 11, 2017.

RECOMMENDATION. In accordance with Policy Statements 15 and 17 and the County's posted Road Acceptance Procedures, criteria have been met for presentation to the Public Facilities Committee to consider acceptance of Stillwell Road into the County Road System. If acceptance of Stillwell Road is affirmed by the Public Facilities Committee and County Council, the road will not be officially added to the County Road System until all right of way deeds are correctly executed and recorded.

JRM/plw

Attachments: 1. Location Map
2. Request Letter/Petition
3. Stillwell Road Estimated Maintenance Cost

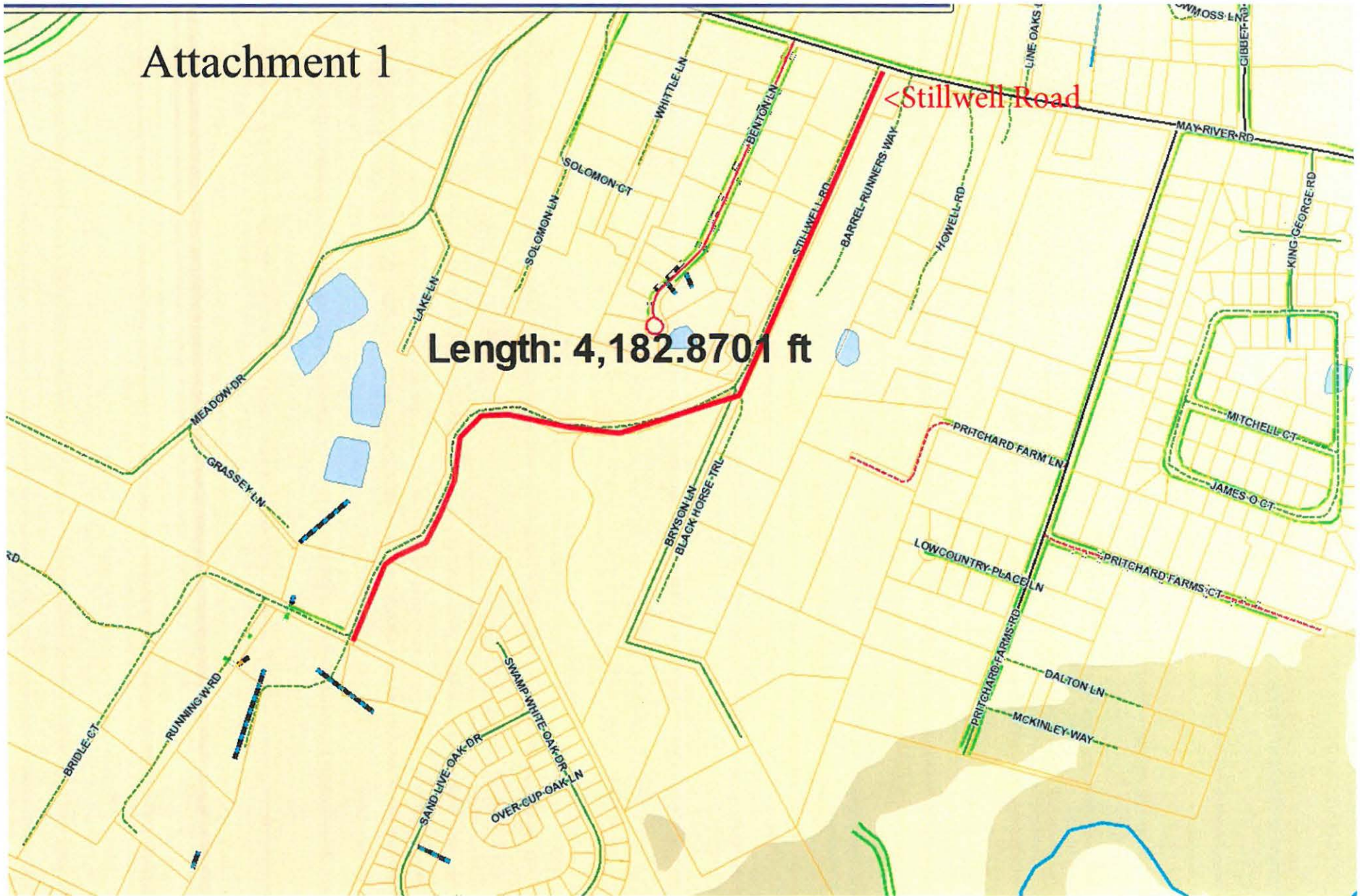
cc: David Wilhelm

Roads/AcceptPFCapp

Attachment 1

Length: 4,182.8701 ft

<Stillwell Road



Attachment 2

August 19, 2015

Mr. Eric W. Klatt
Right-of-Way Manager
Beaufort County Engineering Division
P.O. Drawer 1228
Beaufort, SC 29901-1228

Dear Mr. Klatt:

As we have previously discussed, the attached Beaufort County, SC Road Acceptance Application forms are submitted in support of a petition requesting that Beaufort County accept Stillwell Road into the County Road System for perpetual maintenance and repair. At present, Stillwell Road is a private road established as a 60 ft. right-of-way leading to Midway Farms (MWF) subdivision.

When lots in Midway Farms are purchased, as a member of the MWF Homeowners' Association (HOA), Midway Farms Association, Inc., and as required by MWF Restrictive Covenants, each purchaser accepts responsibility for maintaining Stillwell Road and all other roads in the MWF subdivision. For over 30 years, MWF Association has been solely responsible for maintenance of Stillwell Road and has spent thousands of the personal funds of MWF lot owners to provide such maintenance.

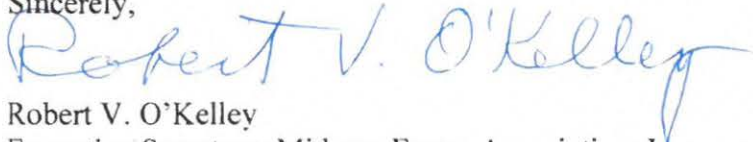
There are fifteen property owners in MWF. There are at least twenty-seven (based on USPS boxes) additional property owners that must utilize Stillwell Road to access their properties. One of those properties also accommodates a religious retreat; two others are horse barns accommodating numerous horses including, "Heroes on Horseback". Those specific properties, experience traffic loads far beyond that of single family residences. Additionally, some of the homes along Stillwell house multiple families.

As far as I am aware, the attached Road Acceptance Forms represent all the property owners along Stillwell Road. By way of this letter and the attached Road Acceptance Applications, the residents of Stillwell Road and Midway Farms Association, Inc. respectively request that Stillwell Road be accepted into the Beaufort County Road System for perpetual maintenance and repair. As the area around MWF continues to develop and additional residents must access their property utilizing Stillwell Road, it is becoming increasingly difficult for MWF Association to be held solely responsible for its maintenance. Acceptance of the road into the County Road System would seem to be fully justified since a large number of the property owners utilizing Stillwell as access to

their property are not MWF residents. MWF Association, Inc. will continue to maintain Bridle Court and other roads leading to and in the subdivision.

We very much appreciate your consideration of our request. If I can be of service in providing other documentation, etc., please do not hesitate to let me know.

Sincerely,

A handwritten signature in blue ink that reads "Robert V. O'Kelley". The signature is fluid and cursive, with a long horizontal stroke at the end.

Robert V. O'Kelley
Executive Secretary, Midway Farms Association, Inc.
64 Bridle Court
Bluffton, SC 29910-6613
(843) 757-2479
CaptainBob42@aol.com

Approved by MWF Board of Directors
August 18, 2015

BEAUFORT COUNTY, SOUTH CAROLINA
ROAD ACCEPTANCE APPLICATION

TO: Patty Wilson
Right of Way Manager
Beaufort County

FROM: Property Owner(s) of 108 Stillwell Rd. (name of Private Road or Subdivision containing private road(s), Beaufort, SC

DATE: Oct. 18, 17

We, the undersigned property owners with land adjoining the above referenced street/road, do hereby petition Beaufort County to accept this private road into the County Road System for scheduled maintenance and repair. We have read Beaufort County Policy Statements 15 and 17 and understand that:

1. This application will be presented to Beaufort County Council and if it is accepted we will be required to grant the County a 50' wide right-of-way, including the existing roadway and whatever additional land is required to assemble a 50' right-of-way, and existing or proposed drainage easements necessary for adequate drainage. By signing below, we hereby agree to do so.

2. By signing this petition, we are giving employees of Beaufort County permission to enter our property for the purpose of surveying the new right-of-way and any existing or proposed drainage easements.

3. One Hundred Percent (100%) of the owners of property which adjoins the right-of-way must sign this application in order for it to be presented to the Public Facilities Committee and County Council for consideration.

4. We understand that the road will be designated for public use.

Elizabeth Bautista
Name (Print)
[Signature]
Name (Signature)
108 Stillwell Rd
Address
Bluffton, SC 29910
City, State, Zip Code
(843) 683-0950
Day Time Phone Number/Email Address
108 Stillwell Rd
Lot or Parcel Number

Name (Print)

Name (Signature)

Address

City, State, Zip Code

Day Time Phone Number/ Email Address

Lot or Parcel Number

Name (Print)

Name (Signature)

Address

City, State, Zip Code

Day Time Phone Number/Email Address

Lot or Parcel Number

Name (Print)

Name (Signature)

Address

City, State, Zip Code

Day Time Phone Number/Email Address

Lot or Parcel Number

NOTE: Please return this application to:
Right of Way Manager
120 Shanklin Road
Beaufort SC 29906

BEAUFORT COUNTY, S.C.
ROAD ACCEPTANCE APPLICATION

To: Beaufort County Engineer

From: Property owners of STILLWELL ROAD

Date: May 2015

We, the adjoining land owners of Stillwell Road, petition Beaufort County to accept this private road into the County Road System for perpetual maintenance and repair. We understand that, collectively, we will be required to deed a fifty-foot (50') wide right-of-way to Beaufort County as a condition of acceptance. This application will not be considered without the signatures of all of the adjoining property owners.

OWNERS:

✓ NCH Properties LLC
Name (print)

[Signature]
Name (signature)

190 Greenwood Drive
Mailing Address

H. Itz Road SC 29928
City, State, Zip

843 671 2686
Day-Time Phone Number

95 Stillwell
Lot or Parcel Number

R600 036 000 016K 0000 + 16C

OWNERS:

✓ RAFAEL HERNANDEZ HERNANDEZ
Name (print)

[Signature]
Name (signature)

108 STILLWELL RD.
Mailing Address

BLUFFTON, SC 29910
City, State, Zip

843-683-3560
Day-Time Phone Number

108 STILLWELL RD.
Lot or Parcel Number

R600 036 000 0377 0000

OWNERS:

✓ Gustavo Angeles
Name (print)

Gustavo Angeles
Name (signature)

449 Live Oak Walk Bluffton SC 29910
Mailing Address

22 Stillwell Rd. (owner)
BLUFFTON, SC 29910
City, State, Zip

(843) 684-9733
Day-Time Phone Number

22 STILLWELL RD.
Lot or Parcel Number

R600 036 000 016K 0000

OWNERS:

Name (print)

Name (signature)

Mailing Address

City, State, Zip

Day-Time Phone Number

Lot or Parcel Number

BEAUFORT COUNTY, S.C.
ROAD ACCEPTANCE APPLICATION

To: Beaufort County Engineer

From: Property owners of STILLWELL ROAD

Date:

10/29/16

We, the adjoining land owners of Stillwell Road, petition Beaufort County to accept this private road into the County Road System for perpetual maintenance and repair. We understand that, collectively, we will be required to deed a fifty-foot (50') wide right-of-way to Beaufort County as a condition of acceptance. This application will not be considered without the signatures of all of the adjoining property owners.

OWNERS:

MAY L. BAIRD

Name (print)

May L Baird

Name (signature)

2550 CARRIAGE DR

Mailing Address

SUMTER, SC 29154

City, State, Zip

803 840 0466

Day-Time Phone Number

122 STILLWELL RD

Lot or Parcel Number

OWNERS:

Name (print)

Name (signature)

Mailing Address

City, State, Zip

Day-Time Phone Number

Lot or Parcel Number

OWNERS:

Name (print)

Name (signature)

Mailing Address

City, State, Zip

Day-Time Phone Number

Lot or Parcel Number

OWNERS:

Name (print)

Name (signature)

Mailing Address

City, State, Zip

Day-Time Phone Number

Lot or Parcel Number

BEAUFORT COUNTY, S.C.
ROAD ACCEPTANCE APPLICATION

To: Beaufort County Engineer

From: Property owners of STILLWELL ROAD

Date: 3/13/17

We, the adjoining land owners of Stillwell^{well} Road, petition Beaufort County to accept this private road into the County Road System for perpetual maintenance and repair. We understand that, collectively, we will be required to deed a fifty-foot (50') wide right-of-way to Beaufort County as a condition of acceptance. This application will not be considered without the signatures of all of the adjoining property owners.

OWNERS:

Carol W Church
Name (print)

Carol W Church
Name (signature)

140 Stillwell Rd
Mailing Address

Bluffton, SC 29910
City, State, Zip

843-384-7484
Day-Time Phone Number

Parcel B-1 Fox Meadowlake Plantation
Lot or Parcel Number

R600 036 000 0363 0000

OWNERS:

Name (print)

Name (signature)

Mailing Address

City, State, Zip

Day-Time Phone Number

Lot or Parcel Number

OWNERS:

Michael D Church
Name (print)

Michael D Church
Name (signature)

140 Stillwell Rd
Mailing Address

Bluffton, SC 29910
City, State, Zip

843-693-4369
Day-Time Phone Number

Lot or Parcel Number

OWNERS:

Name (print)

Name (signature)

Mailing Address

City, State, Zip

Day-Time Phone Number

Lot or Parcel Number

BEAUFORT COUNTY, S.C.
ROAD ACCEPTANCE APPLICATION

To: Beaufort County Engineer

From: Property owners of STILLWELL ROADDate 6-16-15

We, the adjoining land owners of Stillwell Road, petition Beaufort County to accept this private road into the County Road System for perpetual maintenance and repair. We understand that, collectively, we will be required to deed a fifty-foot (50') wide right-of-way to Beaufort County as a condition of acceptance. This application will not be considered without the signatures of all of the adjoining property owners.

OWNERS:

Herb Spaulding
Name (print)Herb Spaulding
Name (signature)8 Courtland Lane
Mailing AddressBluffton SC 29910
City, State, Zip843-384-7553
Day-Time Phone NumberLot 226 Stillwell Rd.
Lot or Parcel NumberBlock 036 on 0426 0000

OWNERS:

Name (print)

Name (signature)

Mailing Address

City, State, Zip

Day-Time Phone Number

Lot or Parcel Number

OWNERS:

Name (print)

Name (signature)

Mailing Address

City, State, Zip

Day-Time Phone Number

Lot or Parcel Number

OWNERS:

Name (print)

Name (signature)

Mailing Address

City, State, Zip

Day-Time Phone Number

Lot or Parcel Number

BEAUFORT COUNTY, SC
ROAD ACCEPTANCE APPLICATION

To: Beaufort County Engineer

From: Property owners of STILLWELL ROAD

Date: 8/3/15

We, the adjoining land owners of Stillwell Road, petition Beaufort County to accept this private road into the County Road System for perpetual maintenance and repair. We understand that collectively, we will be required to deed a fifty-foot (50') wide right-of-way to Beaufort County as a condition of acceptance. This application will not be considered without the signatures of all of the adjoining property owners.

OWNERS

Name (print)

Name (signature)

Mailing Address

City, State, Zip

Day-Time Phone Number

Lot or Parcel Number

OWNERS

Name (print)

Name (signature)

Mailing Address

City, State, Zip

Day-Time Phone Number

Lot or Parcel Number

OWNERS

Name (print)

Name (signature)

Mailing Address

City, State, Zip

Day-Time Phone Number

Lot or Parcel Number

OWNERS

Name (print)

Name (signature)

Mailing Address

City, State, Zip

Day-Time Phone Number

Lot or Parcel Number

Archie Sellow

BEAUFORT COUNTY, S.C.
ROAD ACCEPTANCE APPLICATION

To: Beaufort County Engineer

From: Property owners of STILLWELL ROAD

Date: Apr 2, 2017

We, the adjoining land owners of Still^{well} Road, petition Beaufort County to accept this private road into the County Road System for perpetual maintenance and repair. We understand that, collectively, we will be required to deed a fifty-foot (50') wide right-of-way to Beaufort County as a condition of acceptance. This application will not be considered without the signatures of all of the adjoining property owners.

OWNERS:

Emily & Christopher Macias

Name (print)

Emily Macias

Name (signature)

40 Stillwell Rd

Mailing Address

Bluffton, SC 29910

City, State, Zip

912-704-6712

Day-Time Phone Number

Lot 1 Parcel D Stillwell Rd

Lot or Parcel Number

R 600 036 000 0016 0001

OWNERS:

Name (print)

Name (signature)

Mailing Address

City, State, Zip

Day-Time Phone Number

Lot or Parcel Number

OWNERS:

Name (print)

Name (signature)

Mailing Address

City, State, Zip

Day-Time Phone Number

Lot or Parcel Number

OWNERS:

Name (print)

Name (signature)

Mailing Address

City, State, Zip

Day-Time Phone Number

Lot or Parcel Number

BEAUFORT COUNTY, S.C.
ROAD ACCEPTANCE APPLICATION

To: Beaufort County Engineer

From: Property owners of STILLWELL ROAD

Date: 7/29/15

We, the adjoining land owners of Stillwell Road, petition Beaufort County to accept this private road into the County Road System for perpetual maintenance and repair. We understand that, collectively, we will be required to deed a fifty-foot (50') wide right-of-way to Beaufort County as a condition of acceptance. This application will not be considered without the signatures of all of the adjoining property owners.

OWNERS:

Fred C. Byrd
Name (print)

Fred C. Byrd
Name (signature)

121 Stillwell Rd
Mailing Address

Bluffton, SC 29910
City, State, Zip

(843) 757-2349
Day-Time Phone Number

16C
Lot or Parcel Number

Block 026 000 0241 000

OWNERS:

Name (print)

Name (signature)

Mailing Address

City, State, Zip

Day-Time Phone Number

Lot or Parcel Number

OWNERS:

Fred M. Byrd
Name (print)

Fred M. Byrd
Name (signature)

157 Stillwell Rd
Mailing Address

Bluffton, SC 29910
City, State, Zip

(843) 757-3157
Day-Time Phone Number

16D
Lot or Parcel Number

Block 026 000 0241 000

OWNERS:

Name (print)

Name (signature)

Mailing Address

City, State, Zip

Day-Time Phone Number

Lot or Parcel Number

BEAUFORT COUNTY, S.C.
ROAD ACCEPTANCE APPLICATION

To: Beaufort County Engineer

From: Property owners of STILLWELL ROAD

Date: April 2015

We, the adjoining land owners of Stillwell Road, petition Beaufort County to accept this private road into the County Road System for perpetual maintenance and repair. We understand that, collectively, we will be required to deed a fifty-foot (50') wide right-of-way to Beaufort County as a condition of acceptance. This application will not be considered without the signatures of all of the adjoining property owners.

OWNERS:

MIKE ROBINSON
Name (print)

Mike Robinson
Name (signature)

28 GROVEWOOD DRIVE
Mailing Address

Bluffton SC 29910
City, State, Zip

843-301-8385
Day-Time Phone Number

LOT 1 PARCEL D STILLWELL RD
Lot or Parcel Number

PB 44 P100

OWNERS:

Jasenia Pencil
Name (print)

Jasenia Pencil
Name (signature)

22 Stillwell Rd.
Mailing Address

Bluffton, S.C. 29910
City, State, Zip

843 505 3431
Day-Time Phone Number

Lot or Parcel Number

OWNERS:

MIKE Holloway
Name (print)

Mike Holloway
Name (signature)

20 Stillwell Rd
Mailing Address

Bluffton SC 29910
City, State, Zip

843 757 6376
Day-Time Phone Number

R600 036 000 016 m 0000
Lot or Parcel Number

OWNERS:

DALE E FRANK
Name (print)

DALE E FRANK
Name (signature)

4 Stillwell Rd
Mailing Address

Bluffton SC 29910
City, State, Zip

757-8677
Day-Time Phone Number

R600 036 000 016L 0000
Lot or Parcel Number

Attachment 3

Stillwell Road Estimated Maintenance Cost

Type	Estimated LF of Road	Cost Per LF	Cost Per LF Annualized	Year 1	Year 2	Year 3	Year 4	Year 5	Year 6
Road Maintenance * 4 Services Per Year	4183	0.568	4	9503.776	9503.776	9503.776	9503.776	9503.776	9503.776
Roadside Draiage	4183	6	1	<u>25098</u>	<u>4183</u>	<u>4183</u>	<u>4183</u>	<u>4183</u>	<u>4183</u>
Total Esimated Cost				\$34,601.78	\$13,686.78	\$13,686.78	\$13,686.78	\$13,686.78	\$13,686.78